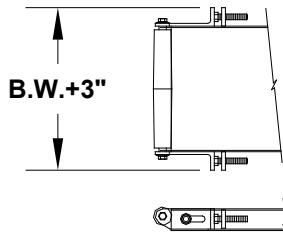
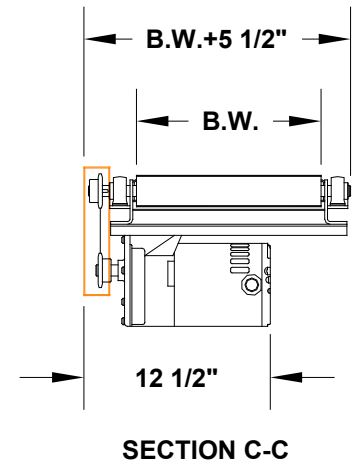
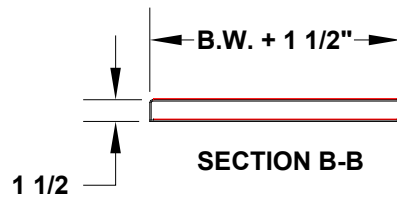
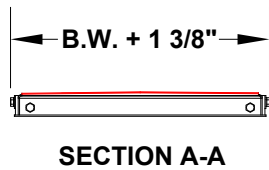
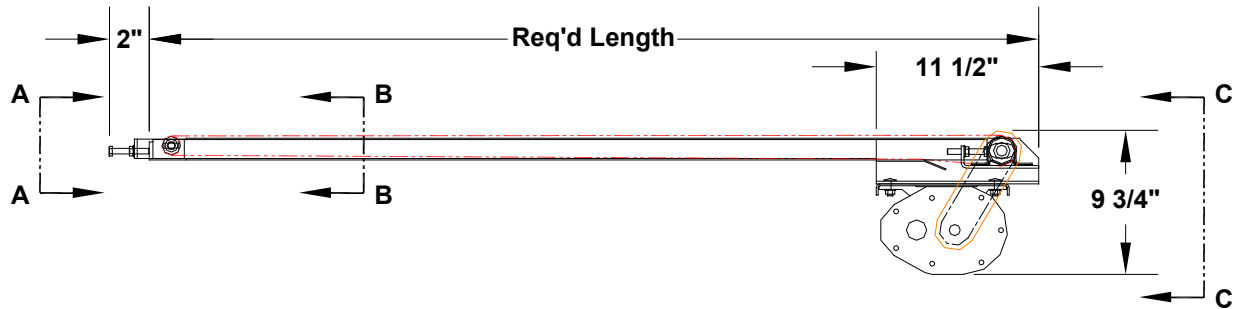
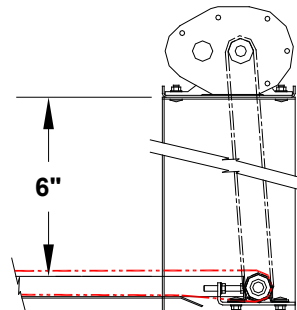


MODEL 102

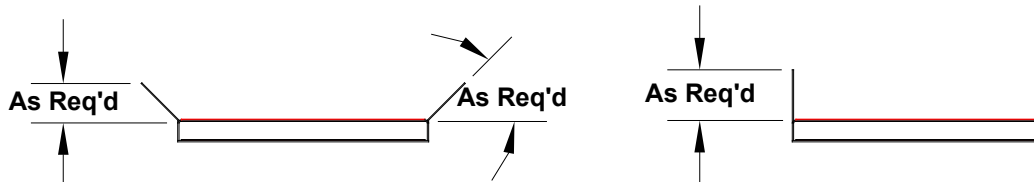
MINI-PRO SLIDER BED CONVEYOR



Optional Special Take-up



Optional Top Mount Drive



Optional Siderails





**MODEL 102
MINI-PRO SLIDER BED CONVEYOR**



Titan Industries has developed the Model 102 MINI-PRO Press Conveyor to solve scrap handling problems from under your dies. The MINI-PRO has a 1 1/2" low profile frame that will easily fit under most die parallels to quickly remove scrap or finished parts. A KNURLED 2" diameter drive pulley provides positive belt pull under extremely oily conditions. MINI-PRO's narrow frame width (belt width plus 1/2") is unique for this type of conveyor. A bottom mounted drive is furnished as standard but a top mounted drive arrangement is optional. Other optional features available are vertical or flared siderails to suit your application, supports as required, different belt types and special belt speeds. Standard belt widths from 2" to 24" wide, with lengths from 4' to 10' maximum as standard.

MODEL 102 SPECIFICATIONS

DRIVE:..... 1/4 H.P. 115/1/60 Open Gearmotor
BELT SPEED:..... 30 F.P.M.
FRAME:..... 1 1/2" Deep Formed 12 Gauge
PULLEYS:..... 2" Diameter Crown Face Knurled Drive
SUPPORTS:..... Supplied as Optional Equipment
PAINT:..... One Coat Industrial Enamel

NOTE: Specifications subject to change without notice