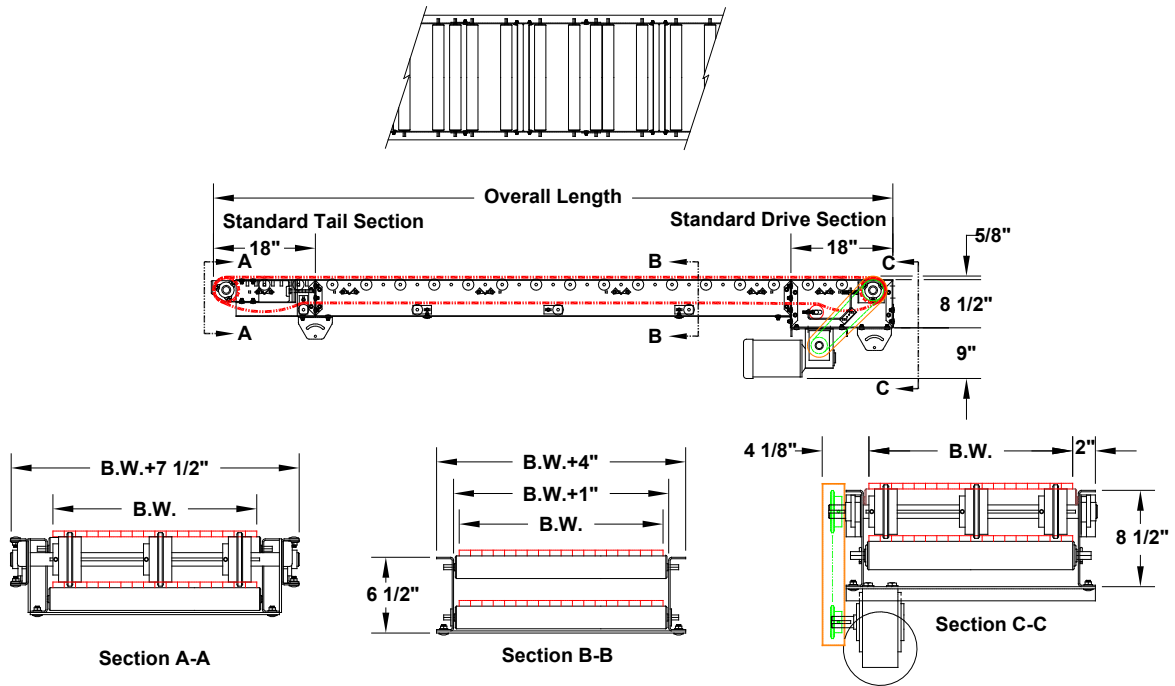


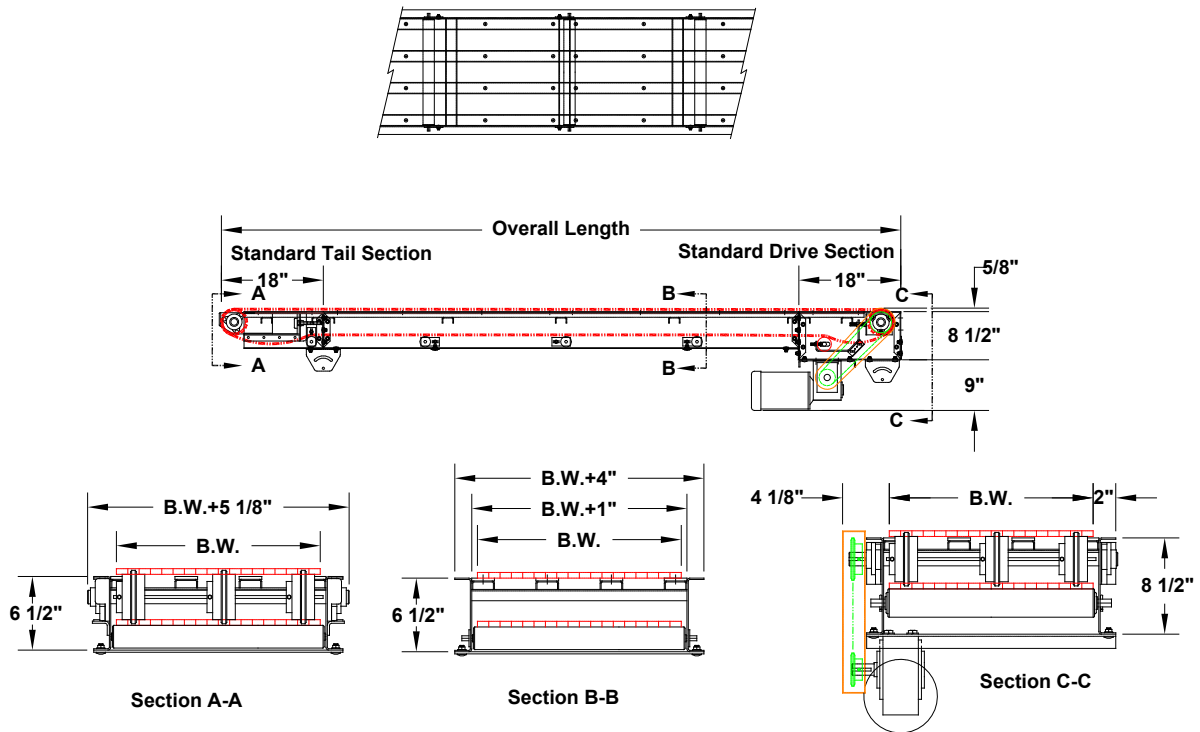
MODEL 124

WIRE MESH BELT CONVEYOR

Roller Bed Deck



Wear Strip Deck



735 Industrial Loop Road • New London, WI 54961-9612 • 920-982-6600 • Fax 920-982-7750 • (Outside Wisconsin) 800-558-3616

Website: www.titanconveyors.com • Email: sales@titanconveyors.com



MODEL 124
WIRE MESH BELT CONVEYOR



Titan offers the Model 124 Wire Mesh with two styles of decks. The roller bed deck is used for heavy loads over long distances, and the longitudinal deck offers an open style for better air flow. Wear strips are furnished in steel, stainless steel or plastic depending on the application. The standard belt is 1/2" x 1" galvanized flat wire mesh with clenched selvage edge. Numerous optional types of belts are available including heavy-duty, stainless steel and balanced spiral. Wire mesh belting is ideal for handling parts that are hot, have to be washed down, dried or cleaned. Belt widths of 12", 18", 24", 30", and 36" are supplied as standard

MODEL 124
SPECIFICATIONS

Table with 2 columns: Specification Name and Value. Rows include DRIVE (1/2 H.P. 230/460/3/60), BELT SPEED (60 F.P.M.), BELT (1/2" X 1" Galvanized Flat Wire Mesh), FRAME (Formed 10 Gauge), SPROCKETS (13 Tooth, 4.4" P.D.), BEARINGS (GREASE SEALED), SUPPORTS ("H" Type Adjustable For 30" Elevation), and PAINT (One Coat Industrial Enamel).

NOTE: Specifications subject to change without notice