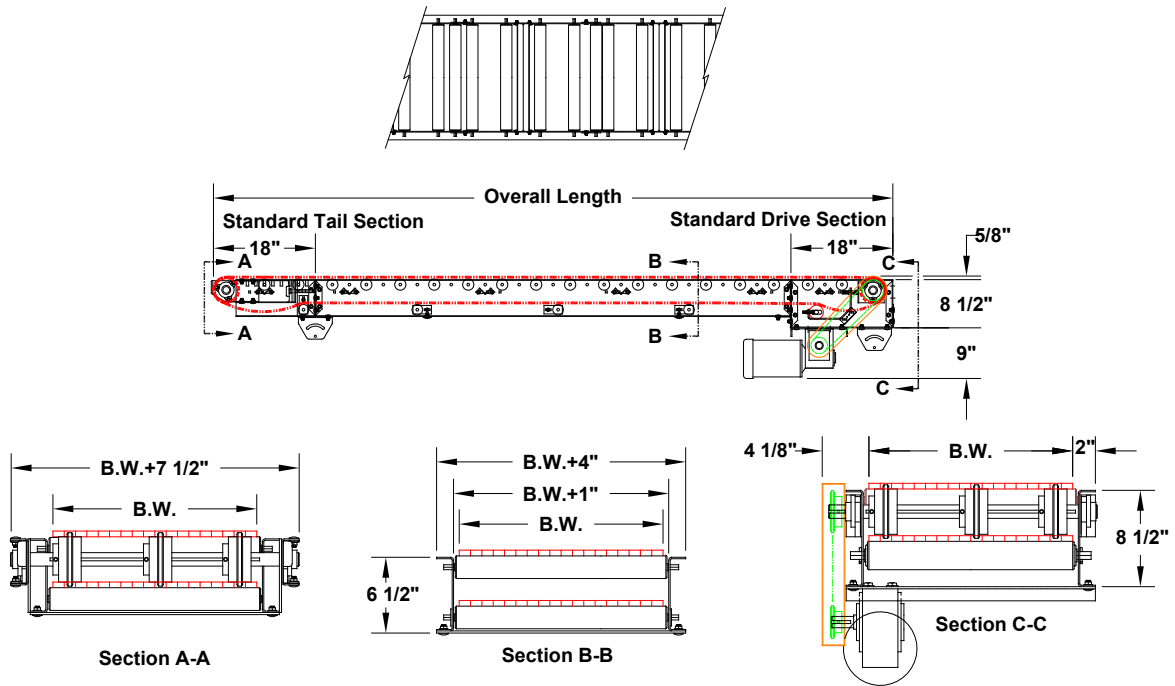


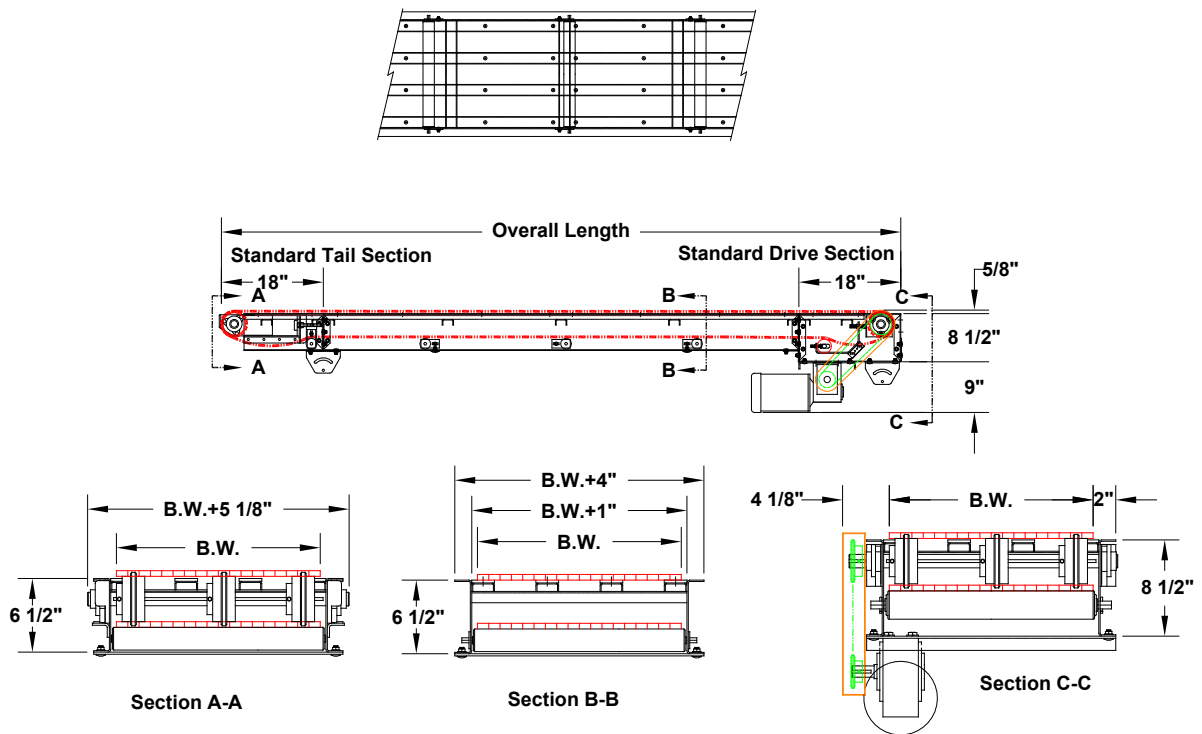
# MODEL 124

## WIRE MESH BELT CONVEYOR

### Roller Bed Deck



### Wear Strip Deck

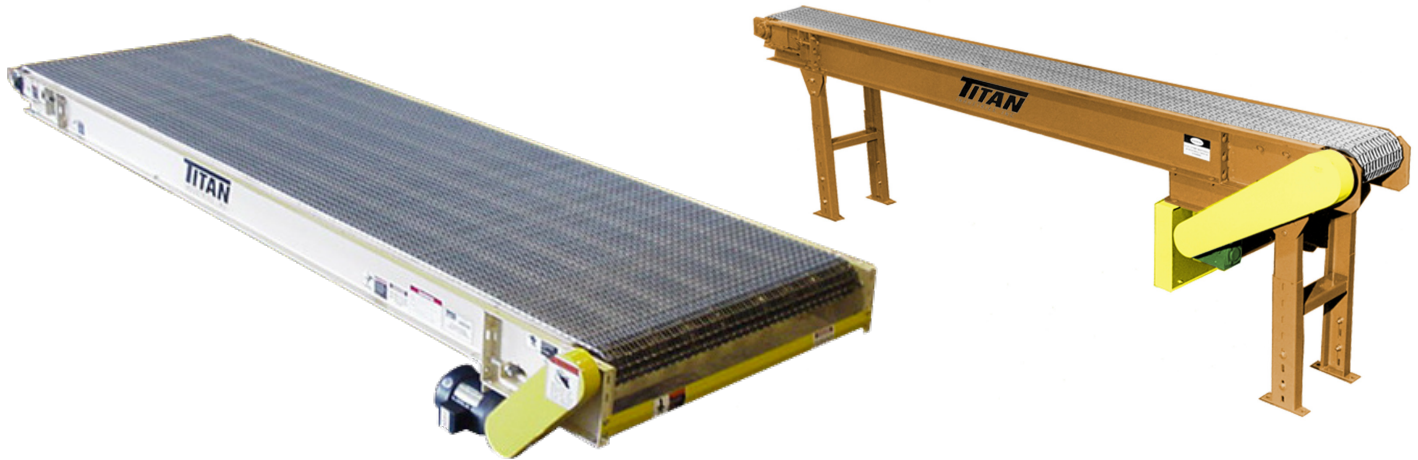


735 Industrial Loop Road • New London, WI 54961-9612 • 920-982-6600 • Fax 920-982-7750 • Toll Free 800-558-3616

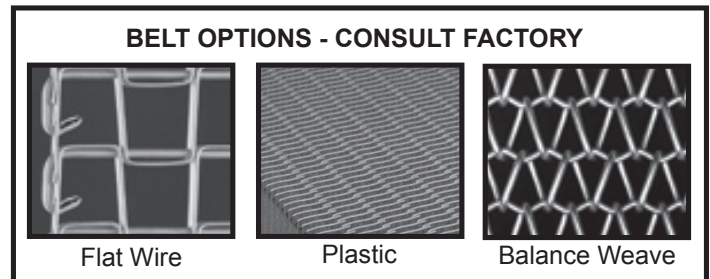
Website: [www.titanconveyors.com](http://www.titanconveyors.com) • Email: [sales@titanconveyors.com](mailto:sales@titanconveyors.com)

# MODEL 124

## WIRE MESH BELT CONVEYOR



Titan offers the **Model 124 Wire Mesh** with two styles of decks. The roller bed deck is used for heavy loads over long distances, and the longitudinal deck offers an open style for better air flow. Wear strips are furnished in steel, stainless steel or plastic depending on the application. The standard belt is 1/2" x 1" galvanized flat wire mesh with clenched selvage edge. Numerous optional types of belts are available including heavy-duty, stainless steel and balanced spiral. Wire mesh belting is ideal for handling parts that are hot, have to be washed down, dried or cleaned. Belt widths of 12", 18", 24", 30", and 36" are supplied as standard



MODEL 124 WIRE MESH BELT CONVEYOR		
	Standard	Options
<b>Belt Widths</b>	12", 18", 24", 30", 36"	4", 6", 8", 10", 14", 16", 20", 40", 42", 48"
<b>Lengths</b>	5' min., max. based on application	
<b>Belt Type</b>	1/2" x 1" galvanized flat wire mesh	Woven wire, balanced spiral, chain edge, stainless steel, high carbon or plastic
<b>Drive</b>	1/2 H.P. 230/460/3/60	3/4, 1, 1-1/2, 2 HP, 150/230/1/60, TEFC, washdown, severe duty, inverter duty, brake motor
<b>Speed</b>	60 f.p.m.	fixed speeds, variable speed
<b>Drive Sprocket</b>	13 tooth, 4.4" P.D., H.D., Keyed	
<b>Frame</b>	Formed 10 ga.	
<b>Deck</b>	Longitudinal steel wear strips	Herringbone deck, roller deck
<b>OPTIONAL</b>		
H.P., drive location, speed, fixed or variable speed, controls, belt widths, deck wear strip options, cooling fans, center drive & take-up, galvanized, stainless, siderails, supports, transfer roller, bolt-on bottom pans, e-stop with pullcord, casters, special paint		

**NOTE: Specifications subject to change without notice**