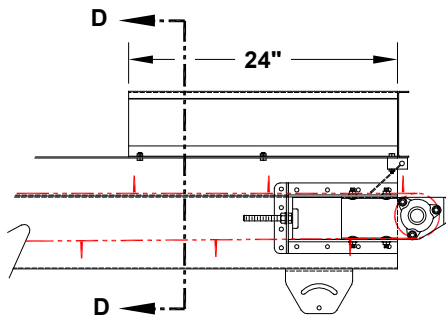
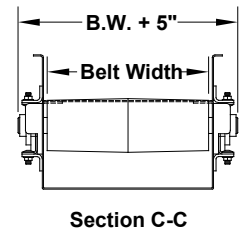
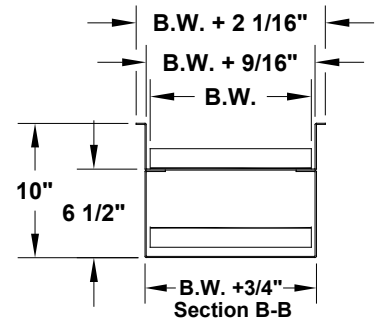
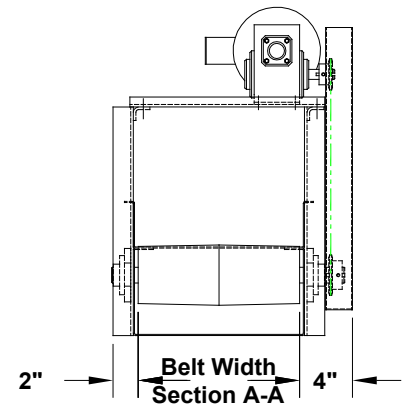
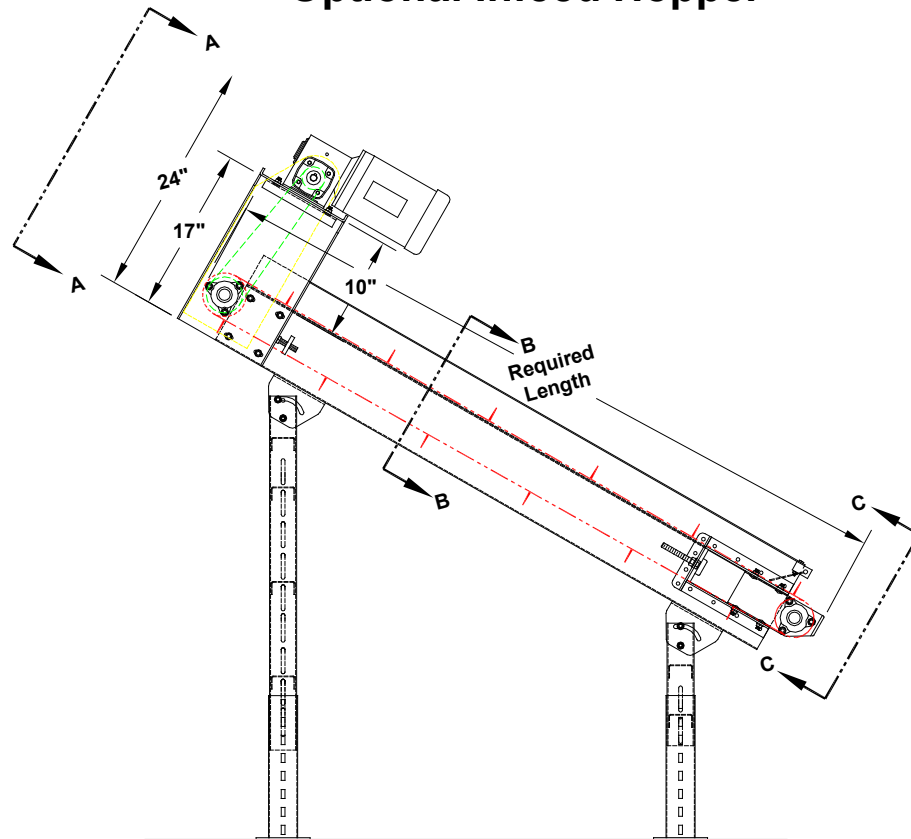


MODEL 304

PARTS CONVEYOR



Optional Infeed Hopper



Conveyor pictured with optional undercarriage

Optional Adjustable Undercarriage Configuration Chart

	45°		24°-29°		Horizontal	16° Decline		
	Max. Dr.	W/Min. In.	Max. Dr.	W/Min. In.	Max. Dr.	W/Min. In.	Max. Dr.	W/Min. In.
4 Ft.	35 3/4"	5 1/4"	28"	(29°) 7 1/4"	34 3/4"	35"	25 1/4"	36 3/4"
6 Ft.	52 1/2"	5 1/4"	39 1/4"	(29°) 6 3/4"	46 3/4"	46 3/4"	31 1/2"	49 1/2"
8 Ft.	69 1/2"	5 1/4"	49 1/4"	(28°) 6 1/2"	60 1/4"	60 1/4"	38"	63 3/4"
10 Ft.	86 1/2"	5 1/4"	56 1/2"	(24°) 9"	77 1/4"	77 1/4"	-	-
12 Ft.	103 1/2"	5 1/4"	66 1/4"	(24°) 9"	77 1/4"	77 1/4"	-	-



735 Industrial Loop Road • New London, WI 54961-9612 • 920-982-6600 • Fax 920-982-7750 • Toll Free 800-558-3616

Website: www.titanconveyors.com • Email: sales@titanconveyors.com

MODEL 304

PARTS CONVEYOR



The rugged **Model 304 Titan Parts Conveyor** is designed to handle various types of products. The Model 304 allows you to convey and elevate product from one machine to another. The Model 304 is offered in seven belt widths with standard units up to twelve feet long. The standard frame design incorporates 3 1/2" high siderails and an enclosed bottom pan for the belt return. Options such as infeed hopper, adjustable fixed supports add to the flexibility of this unit. The optional adjustable undercarriage features eight inch diameter steel wheels for easy handling over rough surfaces.



MODEL304 SPECIFICATIONS		
	Standard	Optional
Belt Widths	4", 6", 8", 12", 18", 24", 36"	10", 14", 16", 30", 30"
Lengths	5' to 12'	3' min. to 20'
Belt Type	2 Ply black neoprene with 1-1/2" cleats on 12" centers	Cleated PVC, food grade, plastic belt, cleat centers & heights to suit
Drive	1/2 H.P. 230/460/3/60	3/4, 1, 1-1/2, HP, 115/230/1/60, TEFC, washdown, severe duty, inverter duty, brake motor
Drive Pulley	4" dia. crowned rubber lagged	
Frame	6-1/2" deep formed 12 g.a.	
OPTIONAL		
Speed, variable speed, belt widths, belt type, side mount/bottom mount drive, controls, hopper, discharge chute, siderails, galvanized, stainless, supports, adjustable undercarriage, casters, special paint		

NOTE: Specifications subject to change without notice