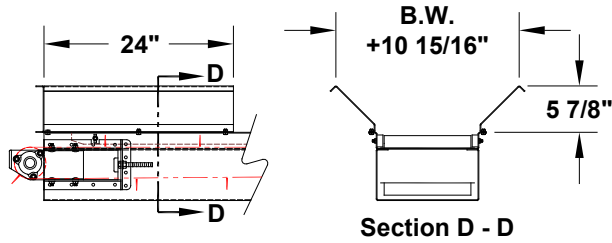


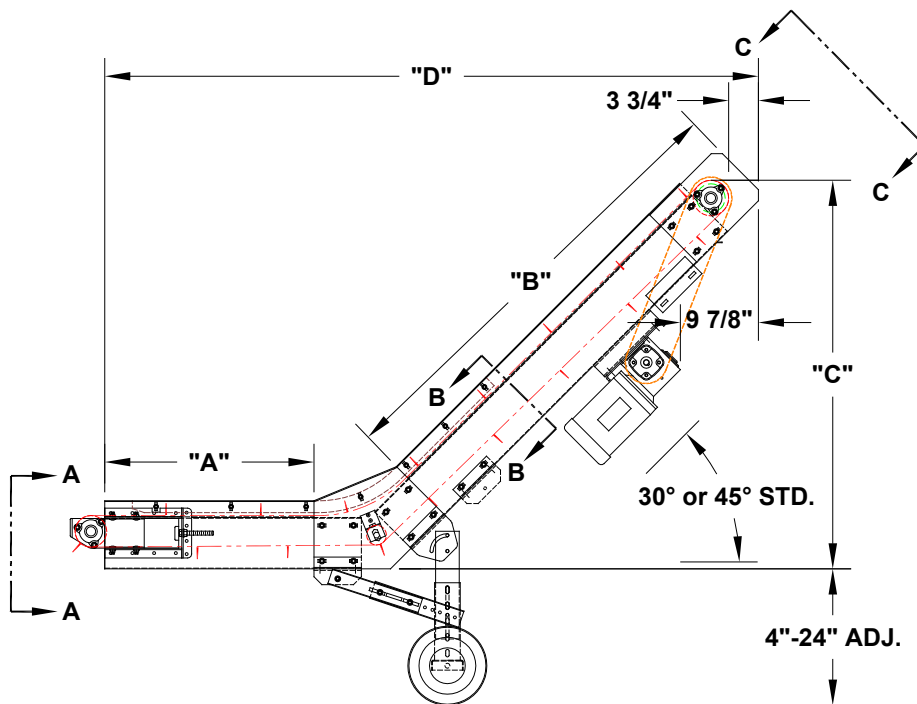
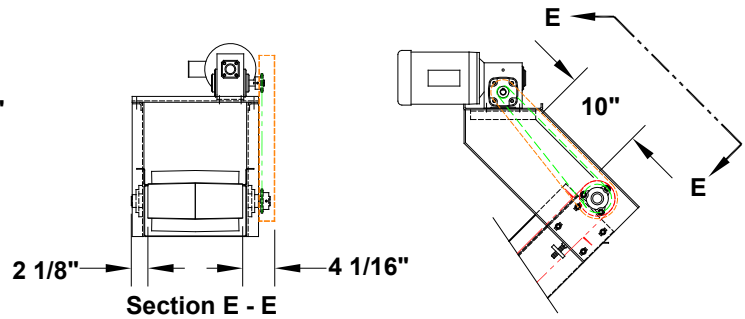
MODEL 310

PARTS CONVEYOR

Optional Infeed Hopper

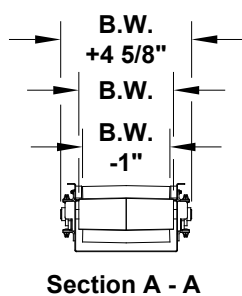


Optional Top Mount Drive

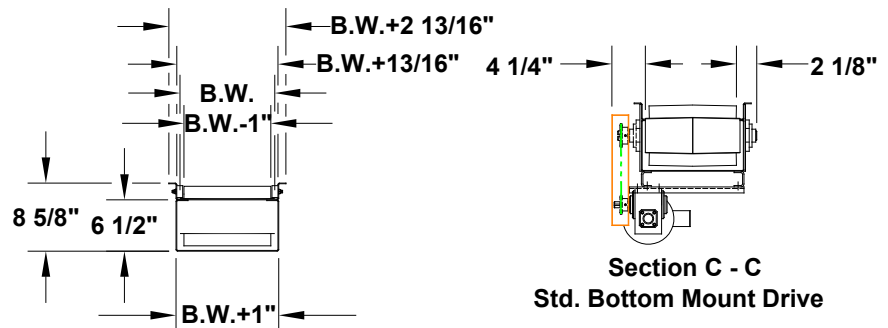


| 30° | | "D" O.A.L. | | | |
|------------|-----|---------------|-------|-----|-------|
| | | "B" (Incline) | | | |
| | | 36" | 48" | 60" | 72" |
| "A" INFEED | 24" | 71 | 81.5 | 92 | 102.5 |
| | 36" | 83 | 93.5 | 104 | 114.5 |
| | 48" | 95 | 105.5 | 116 | 126.5 |
| | 60" | 107 | 117.5 | 128 | 138.5 |
| "C" Hgt. | | 26 | 32 | 38 | 44 |

| 45° | | "D" O.A.L. | | | |
|------------|-----|---------------|------|-------|------|
| | | "B" (Incline) | | | |
| | | 36" | 48" | 60" | 72" |
| "A" INFEED | 24" | 65.5 | 74 | 82.5 | 91 |
| | 36" | 77.5 | 86 | 94.5 | 103 |
| | 48" | 89.5 | 98 | 106.5 | 115 |
| | 60" | 101.5 | 110 | 118.5 | 127 |
| "C" Hgt. | | 34.7 | 43.2 | 51.7 | 60.2 |



Section A - A



Section B - B

Section C - C
Std. Bottom Mount Drive



735 Industrial Loop Road • New London, WI 54961-9612 • 920-982-6600 • Fax 920-982-7750 • Toll Free 800-558-3616

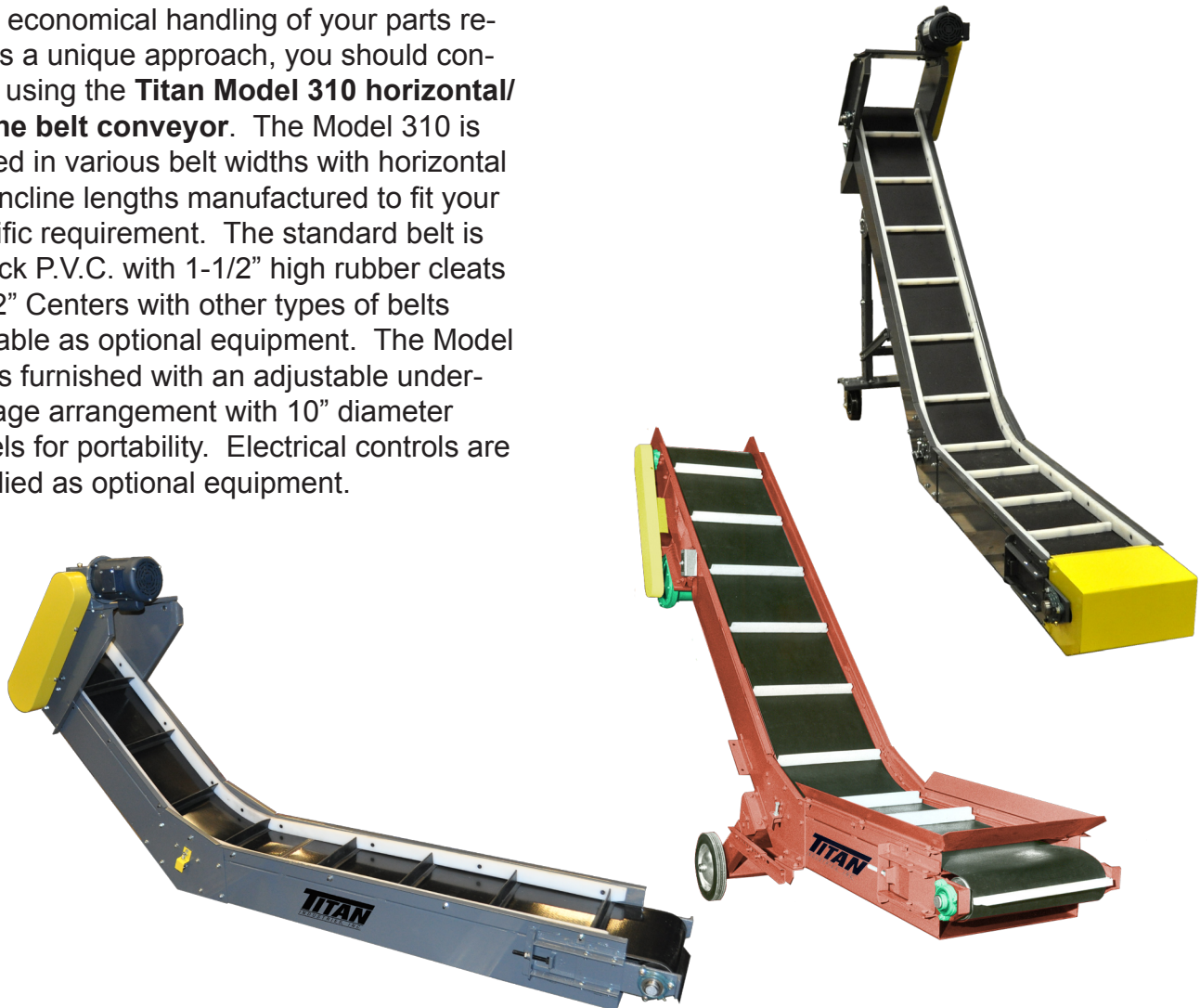
Website: www.titanconveyors.com • Email: sales@titanconveyors.com

MODEL 310

PARTS CONVEYOR



If the economical handling of your parts requires a unique approach, you should consider using the **Titan Model 310 horizontal/incline belt conveyor**. The Model 310 is offered in various belt widths with horizontal and incline lengths manufactured to fit your specific requirement. The standard belt is a black P.V.C. with 1-1/2" high rubber cleats on 12" Centers with other types of belts available as optional equipment. The Model 310 is furnished with an adjustable under-carriage arrangement with 10" diameter wheels for portability. Electrical controls are supplied as optional equipment.



| MODEL 310 SPECIFICATIONS | | |
|--|--|--|
| | Standard | Options |
| Belt Widths | 12", 18", 24" | Specify belt width |
| Lengths | 24" infeed, 36" incline | 36", 48", 60" infeed, 48", 60", 72" incline |
| Curves | 30°, 45° | 60° |
| Belt Type | Black PVC 120 with 1 1/2" high cleat on 12" centers (max.) | Food grade belts - cleats |
| Drive | 1/2 H.P. 230/460/3/60 | 3/4, 1, 1-1/2, HP, 115/230/1/60, TEFC, washdown, severe duty, inverter duty, brake motor |
| Drive Pulley | 4" diameter crown faced rubber lagged | |
| Frame | 6 1/2" deep formed 12 ga. | |
| OPTIONAL | | |
| Drive location, speed, variable speed, controls, lengths, belt type, infeed hopper, discharge chute, siderails, supports, casters, special paint, cleats - Consult Factory | | |

NOTE: Specifications subject to change without notice