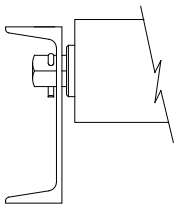


GRAVITY ROLLER CONVEYOR

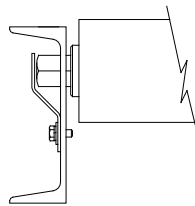
GRAVITY ROLLER CONVEYOR SPECIFICATIONS					
MODEL NUMBER	ROLLER	AXLE	FRAME	MINIMUM CENTERS	ROLLER RATING*
413	1-3/8" Dia. x 18 Gauge	5/16" Hex	Formed 12 Gauge	1-1/2"	50 lbs.
419 420	1.9" Dia. x 16 Gauge 2" Dia. x 16 Gauge	7/16" Hex	Formed 10 Gauge	3"	250 lbs.
425	2-1/2" Dia. x 11 Gauge	11/16" Hex	Formed 7 Gauge	3"	625 lbs.
426	2-5/8" x 7 Gauge	11/16" Hex	Formed 7 Gauge	3"	650 lbs.
435	3-1/2" x .300 wall	1-1/16" Hex	6" @8.2# Structural Channel	4"	2500 lbs.
Roller Centers Available Model 413: 1-1/2", 3", 4-1/2", 6", 9", 12" Model 419-425-426: 3", 4-1/2", 6", 9", 12" Model 435: 4", 6", 8", 12"					
Optional					
Siderails - 1", , 3-1/2", 6" fixed channel, 3-1/2" high adjustable, casters, galvanized, coated, plastic or stainless steel rollers, pop-up stops - manual or air operated, fixed end stops, manual gates, paint					

*Roller Ratings Vary with Between Frame Dimensions

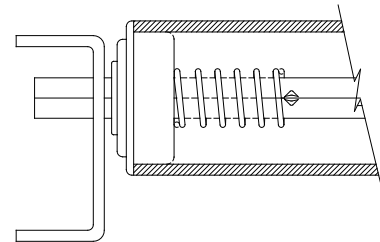
ROLLER RETENTION



COTTER PIN



RETAINING STRIP



SPRING LOADED

NOTE: Not available on Model 435



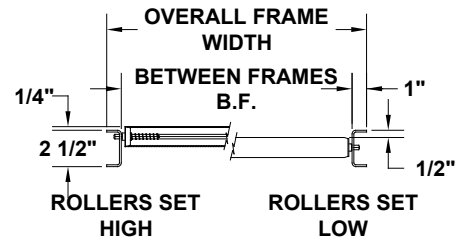
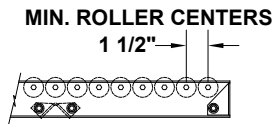
735 Industrial Loop Road • New London, WI 54961-9612 • 920-982-6600 • Fax 920-982-7750 • Toll Free 800-558-3616

Website: www.titanconveyors.com • Email: sales@titanconveyors.com

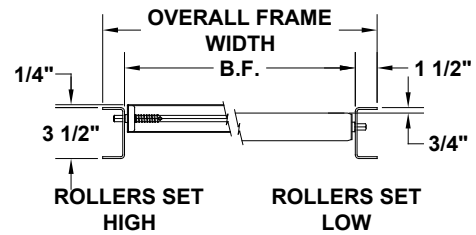
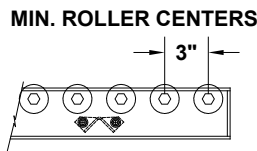
GRAVITY ROLLER CONVEYOR



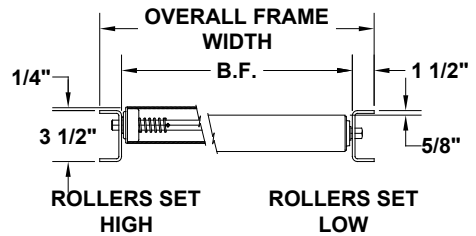
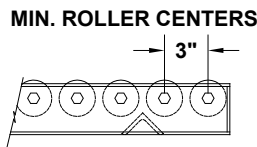
MODEL 413



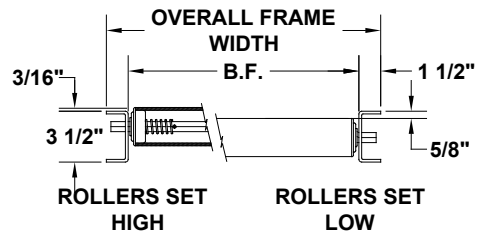
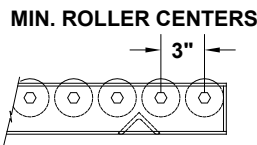
**MODEL 419
MODEL 420**



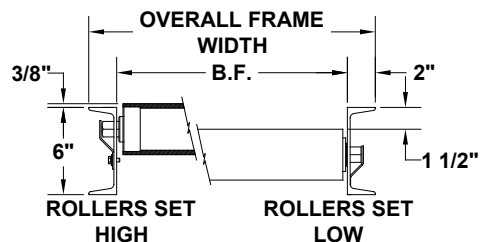
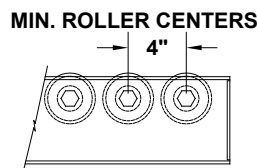
MODEL 425



MODEL 426



MODEL 435



NOTE: Specifications subject to change without notice