

MODEL 526

CHAIN DRIVEN LIVE ROLLER CONVEYOR

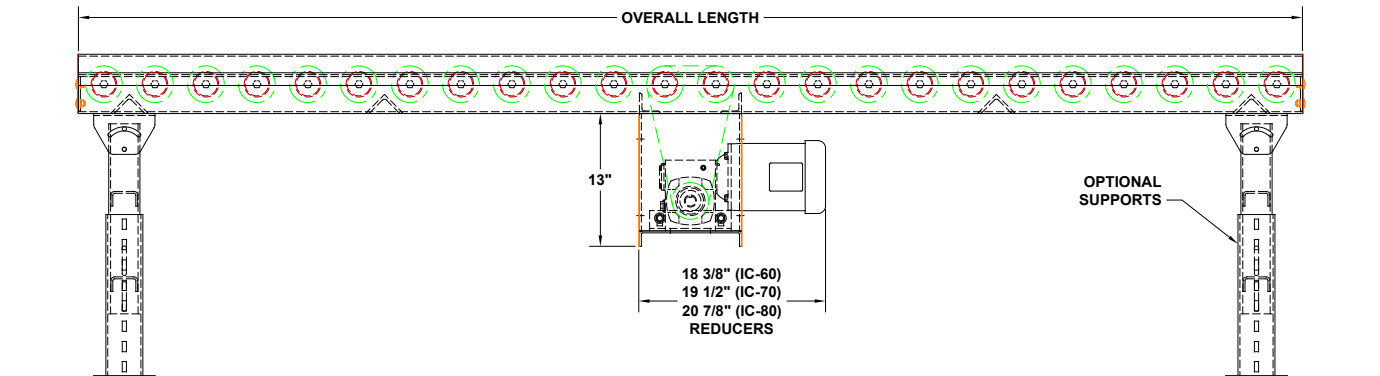


FIGURE "B"

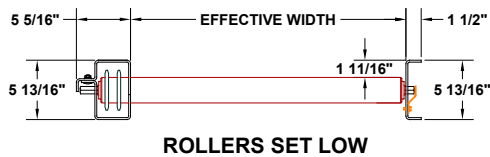


FIGURE "C"

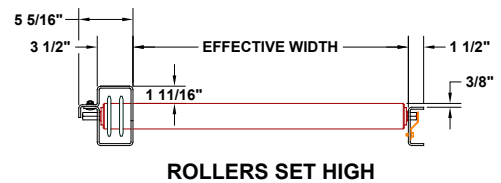


FIGURE "D"

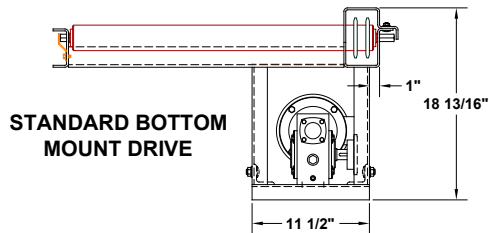


FIGURE "E"

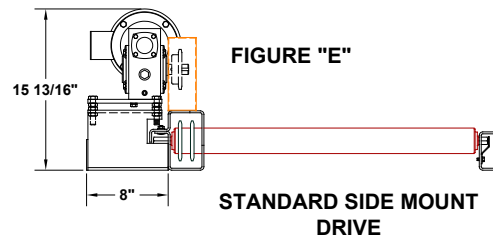


FIGURE "F"

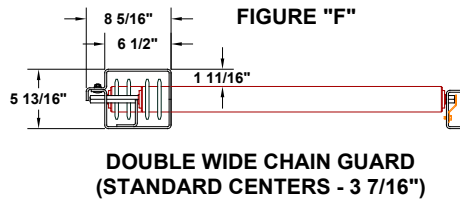
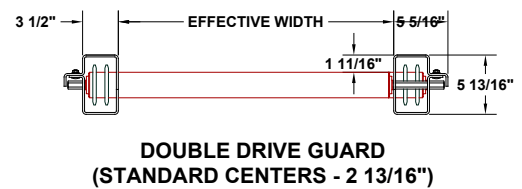


FIGURE "G"

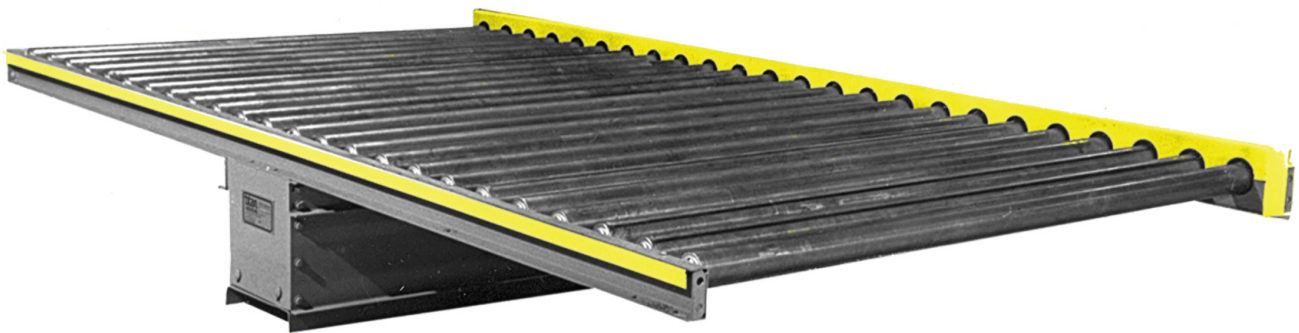


735 Industrial Loop Road • New London, WI 54961-9612 • 920-982-6600 • Fax 920-982-7750 • Toll Free 800-558-3616

Website: www.titanconveyors.com • Email: sales@titanconveyors.com

MODEL 526

CHAIN DRIVEN LIVE ROLLER



Titans' **Model 526** is designed for handling pallets, skids, drums. The unit incorporates a number 50 chain with a roll-to-roll drive, with #60 chain optional for heavier loads. The frame is heavy formed 7 gauge construction with a one piece chain guard. Rollers are 2-5/8" diameter x 7 gauge (**580 lb. capacity**). The standard drive is a 3/4 H.P. with 30 F.P.M. roller speed. A wide range of standard effective widths are available. Standard roller spacing is 5", with 2-13/16", 3-19/32", 4-3/8", and 5-15/16" centers available with #50 chain. Floor supports are optional. The Model 526 comes in lengths to suit with a minimum length of 4' long. Consult the factory for further details.



Special 526 with 3 strand chain transfer

MODEL 526 CHAIN DRIVEN LIVE ROLLER CONVEYOR SPECIFICATIONS

	Standard	Options
Effective Widths	15" to 72"	Specify
Lengths	5' min.	3' min. - max. per application
Roller Size	2 5/8" dia. x 7 ga. with 11/16" hex shaft	
Roller Center	5"	2-13/16", 3-19/32", 4-3/8", 5-15/16", 10"
Frame	Formed 7 ga.	
Drive	3/4 H.P. 230/4603/60	1, 1-1/2, 2 H.P. 115/230/1/60, 575/3/60, severe duty, inverter duty, brake motor
Chain Drive	#50	#60

Optional

Roller Space - Consult factory, Roller Center - Consult Factory, Drive locations: as needed, Galvanized or stainless construction, H. P. , Speeds, Variable speed, Controls, Paint, 2 or 3 strand chain transfers, Pallet lifts, "C" Face brake and Fixed end stop, Rollers set low, UHMW sleeves, Knee braces, Air operated blade stop, Supports - 6" @ #8.2 structural channel

NOTE: Specifications subject to change without notice