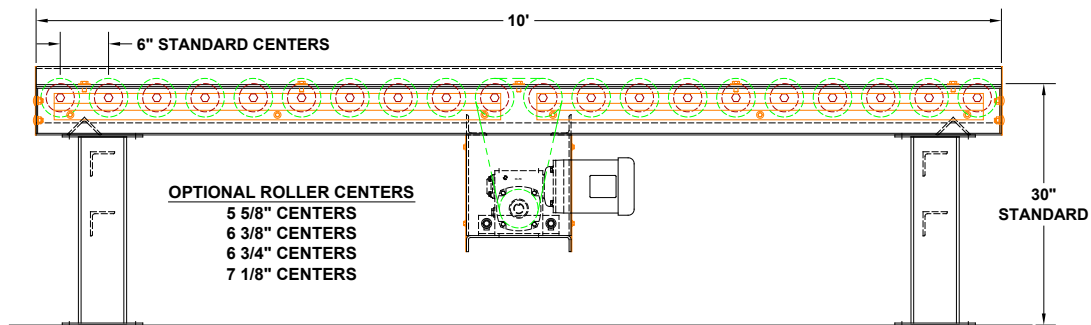
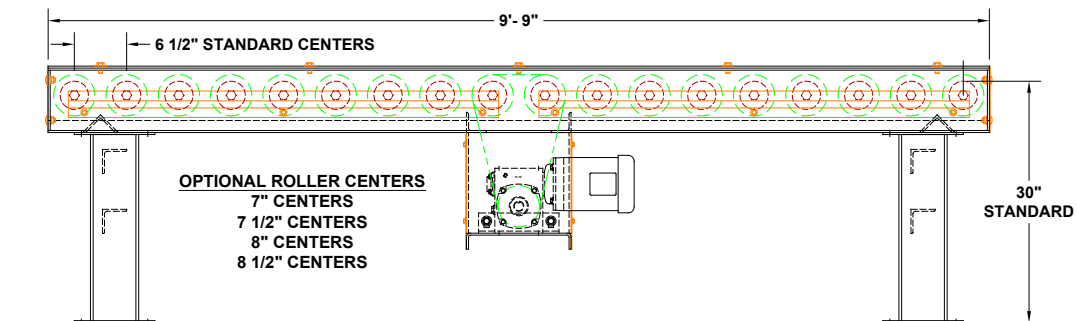
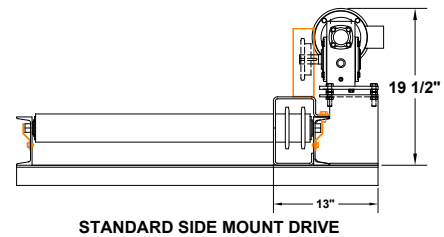
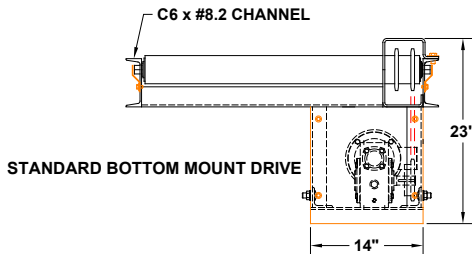
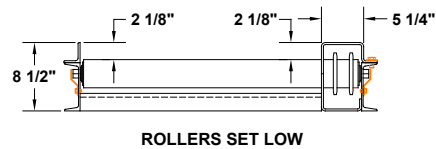
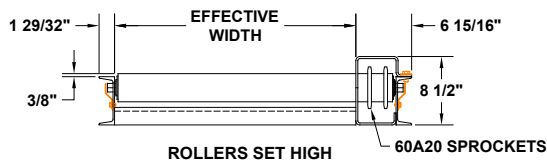


MODEL 535

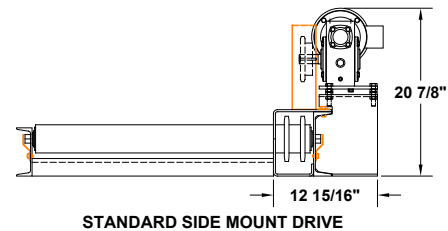
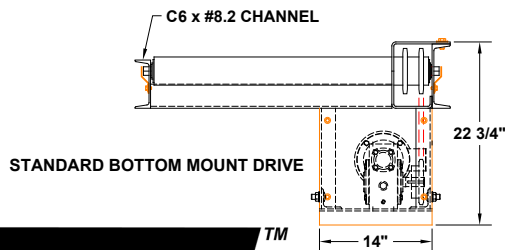
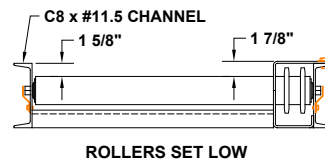
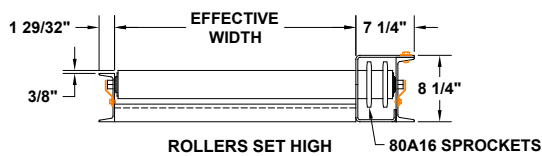
CHAIN DRIVEN LIVE ROLLER CONVEYOR



STANDARD 10' LG. CONVEYOR SECTION W/#60 CHAIN DRIVE



STANDARD 9'-9" LG. CONVEYOR SECTION W/#80 CHAIN DRIVE

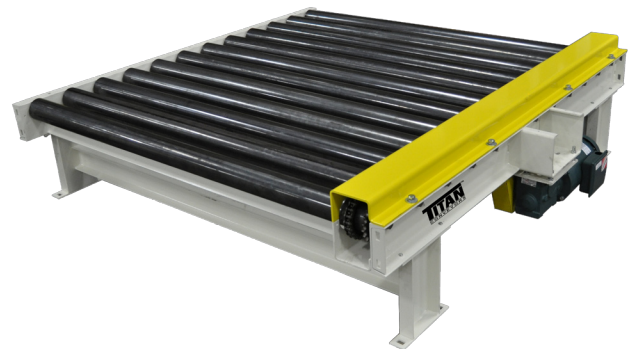
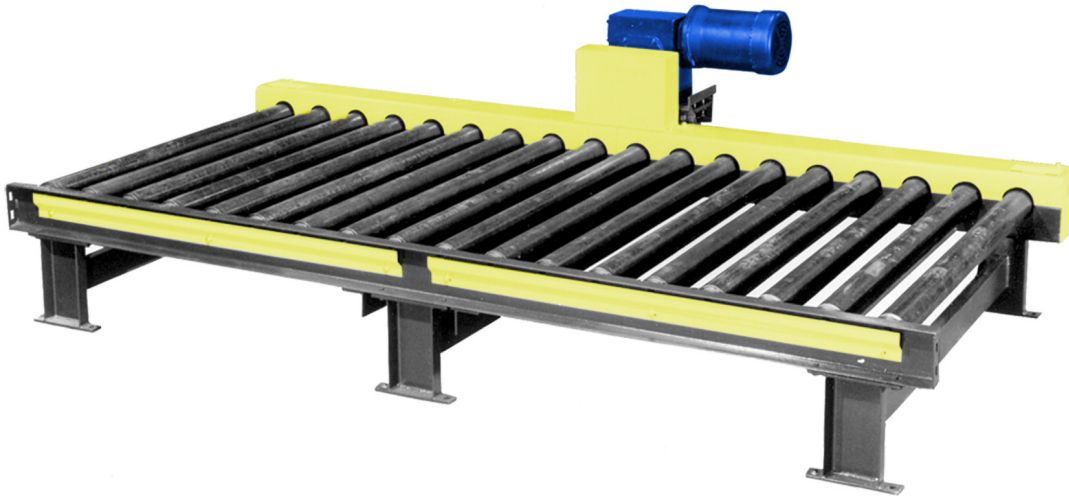


735 Industrial Loop Road • New London, WI 54961-9612 • 920-982-6600 • Fax 920-982-7750 • Toll Free 800-558-3616

Website: www.titanconveyors.com • Email: sales@titanconveyors.com

MODEL 535

CHAIN DRIVEN LIVE ROLLER CONVEYOR



The ultimate in heavy-duty conveying for pallets, skids or drums - the **Model 535** is designed to handle extremely heavy loads. The 3 1/2" diameter x .300 wall (schedule 80 pipe) rollers are rated for 2500 lbs. per roller. The rollers use a heavy-duty industrial, grease sealed, 1 1/16" hex bore bearing. The **Model 535** is available with either #60 or #80 roll-to-roll chain drives depending on chain pull required. Standard construction is a 6" at #8.2 structural channel frame. This unit is available with either a bottom mount or side mount drive. Supports are structural channel (non-adjustable) with foot pads. Roller centers are 6" for #60 chain drive and 6 1/2" for #80 chain drive.

MODEL 535 CHAIN DRIVEN LIVE ROLLER CONVEYOR		
	STANDARD	OPTIONS
Effective Widths	15" to 66"	Customer can specify
Lengths	Per application - 5' Minimum	3' minimum, maximum length based on application
Roller Size	3 1/2" dia. x .300 wall 1-1/16" hex shaft (#2500 roll rating)	
Roller Centers	6"	Roller centers of 4-7/8", 6", 9", 10-1/8", 12" with #60 sprockets #80 roll-to-roll chain drive with roller centers of 6-7/16", 9-7/16", 12-7/16"
Frame	Structural channel	
Drive	3/4 H.P. 230/460/3/60	1, 1-1/2, 2, 3, 5 HP, 115/230/1/60, 575/3/60, severe duty, inverter duty, brake motor
Chain Drive	#60	#80
OPTIONAL		
Roller Space - Consult factory, Roller Center - Consult Factory, Drive locations: as needed, Galvanized or stainless construction, H. P. , Speeds, Variable speed, Controls, Paint, 2 or 3 strand chain transfers, Pallet lifts, "C" Face brake and Fixed end stop, Rollers set low, UHMW sleeves, Galvanized rollers, accumulation sleeves, Knee braces, Air operated blade stop, Supports - 6" @ #8.2 structural channel, Pop-up roller, blade stops, pallet lifts.		

NOTE: Specifications subject to change without notice