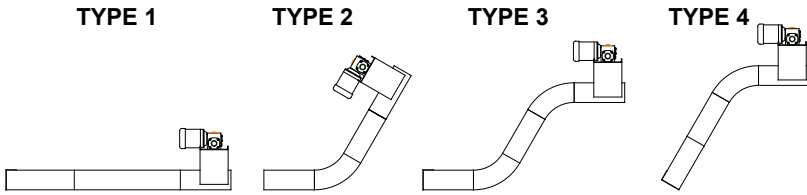


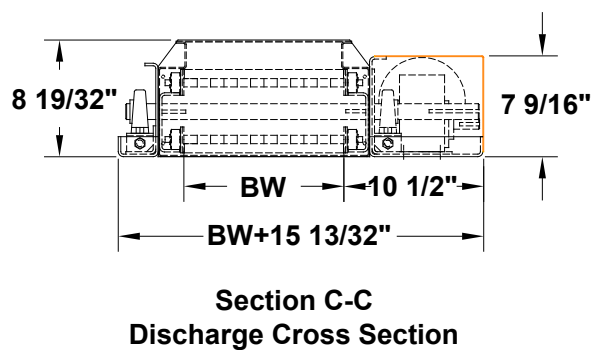
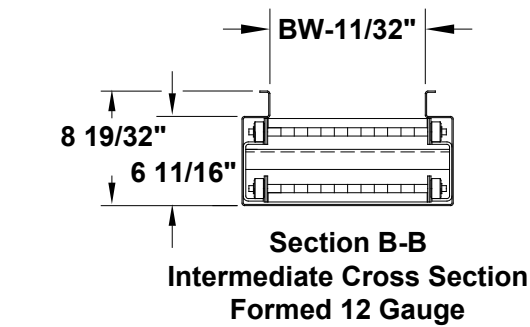
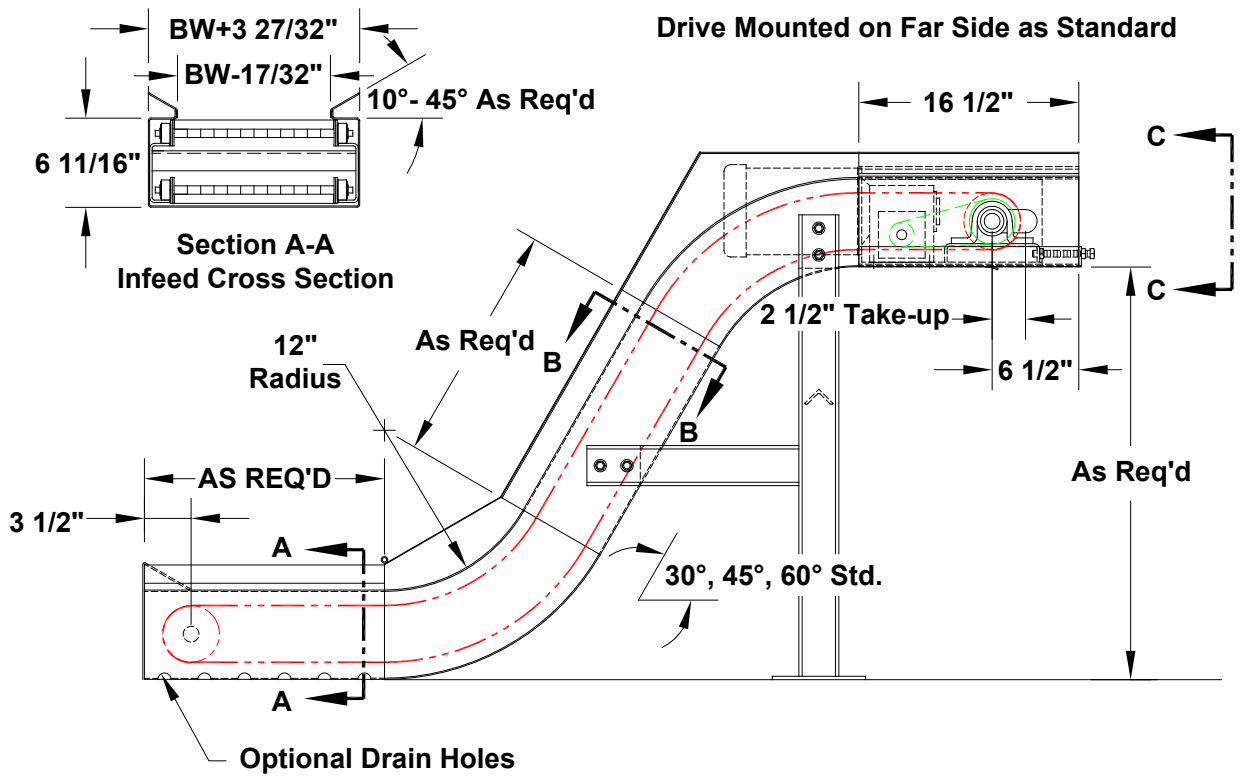
# MODEL 610

## HINGED STEEL BELT CONVEYOR

Model 610 - A variety of types to fit you needs



Special Model 610 with hopper & step plate



735 Industrial Loop Road • New London, WI 54961-9612 • 920-982-6600 • Fax 920-982-7750 • (Outside Wisconsin) 800-558-3616

Website: [www.titanconveyors.com](http://www.titanconveyors.com) • Email: [sales@titanconveyors.com](mailto:sales@titanconveyors.com)

Bulletin 1111 610GH

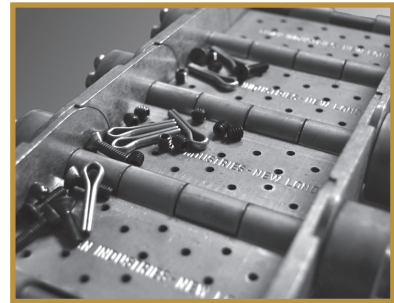
# MODEL 610

## HINGED STEEL BELT CONVEYOR



The Titan Model 610 Chip Conveyor fits the needs of today's machine tool environment. Starting with the low profile 12 gauge frame (6-11/16" deep) this unit is designed for rugged chip handling applications.

**Standard features include flared infeed siderails, liquid tight bottom pan, 2" high vertical siderails with bolt on top cover and chip suppressor, bushed sprockets on the infeed and low profile side mount drive.** Belt widths are available from 6" to 30" with plain, perforated or pimped belt styles available. The 10 F.P.M. belt speed allows for adequate coolant drainage. The Model 610 features the exclusive Titan radial sidewing that virtually eliminates any gap between the sidewings and aprons, thus reducing jamming problems. The unit shown above has optional drain holes on the infeed and an optional right hand drive.



### 2-1/2" RADIAL SIDEWINGS

Exclusive Titan radial sidewing prevents jamming, even with the smallest parts



MODEL 610 2-1/2" HINGED STEEL BELT CONVEYOR		
	STANDARD	OPTIONS
<b>Belt Widths</b>	6", 8", 12", 18", 24"	4", 10", 14", 16"
<b>Belt</b>	2-1/2" pitch plain hinged steel with radial sidewings	Perforated, pimped, perforated & pimped, impact plates
<b>Drive</b>	1/2 HP 230/460/3/60	3/4, 1 HP, Severe duty, brake motor
<b>Speed</b>	10 F.P.M.	Specify
<b>Drive Location</b>	End drive side mount	Top Mount
<b>Curves</b>	30°, 45°, 60°	Special Curves
<b>OPTIONAL</b>		
Motors, controls, welded barrels, paint color, customized infeed siderails, casters, coolant tanks, pumps, drain plugs, zero speed switches, Bulb type infeeds		

**NOTE: Specifications subject to change without notice**