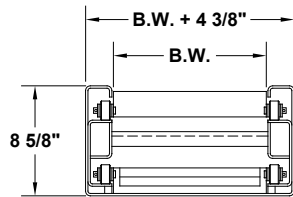
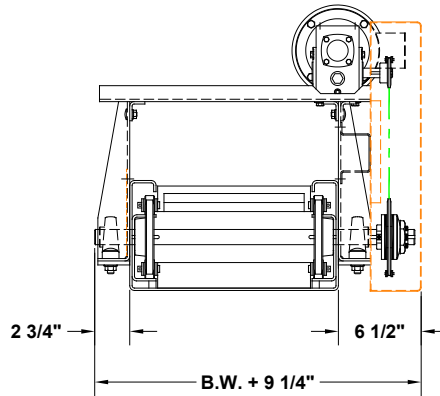


MODEL 670

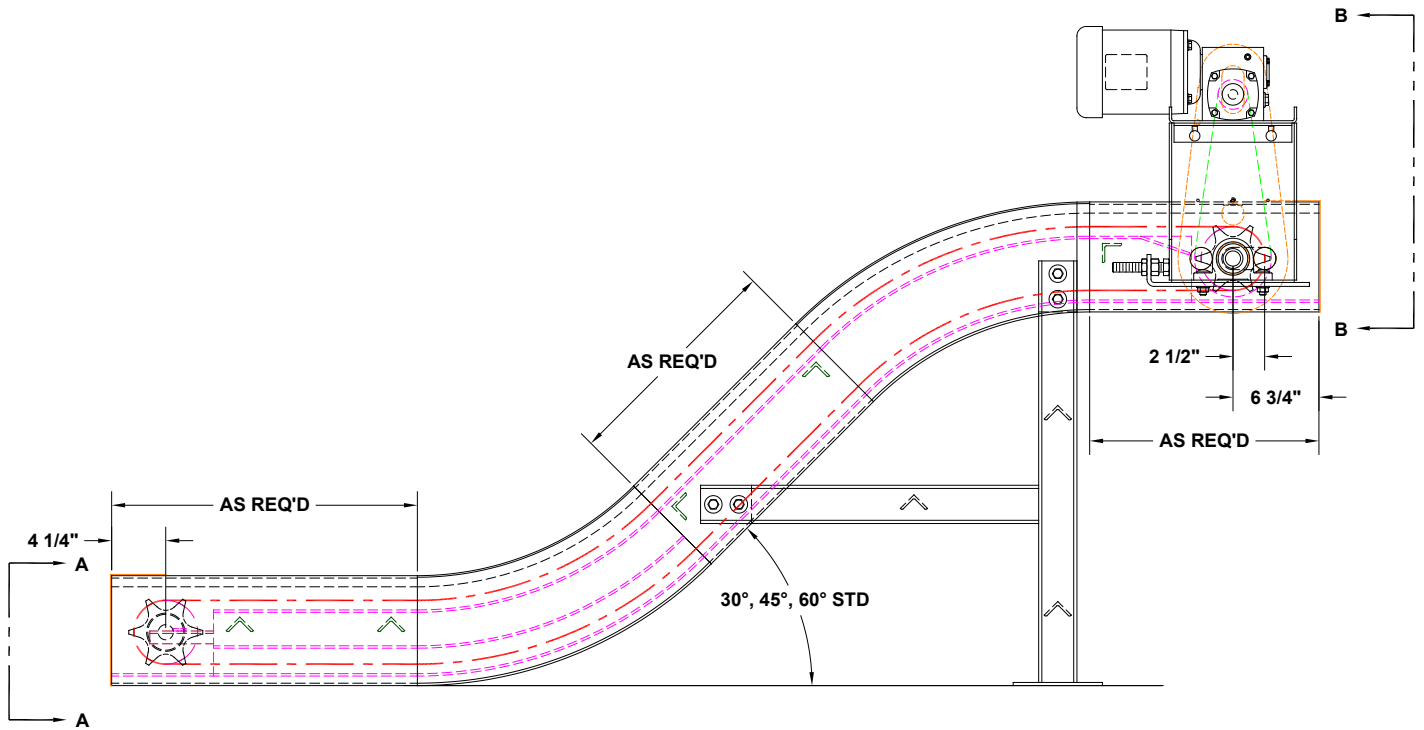
DRAG CHAIN CONVEYOR



SECTION A-A



SECTION B-B



735 Industrial Loop Road • New London, WI 54961-9612 • 920-982-6600 • Fax 920-982-7750 • Toll Free 800-558-3616

Website: www.titanconveyors.com • Email: sales@titanconveyors.com

TITAN™

INDUSTRIES, INC.

MODEL 670 DRAG CHAIN CONVEYOR



The Model 670 Drag Flight Chain Conveyor is ideal for handling cast iron, fine chips, scrap or sludge that would jam a Hinged Steel Belt unit. The 2-1/2" pitch chain has drag flights welded on 12-1/2" centers. Various configurations, lengths and belt widths are available.

MODEL 670 SPECIFICATIONS

DRIVE:..... 1/2 H.P. 230/460/3/60
SPEED: 10 F.P.M.
CHAIN: Heavy-Duty 2-1/2" Pitch
SPROCKETS: 6 Tooth, 5" Pitch Diameter
FRAME: Formed 10 Gauge
BEARINGS: Industrial Relube
PAINT: One Coat Industrial Enamel

NOTE: Specifications subject to change without notice