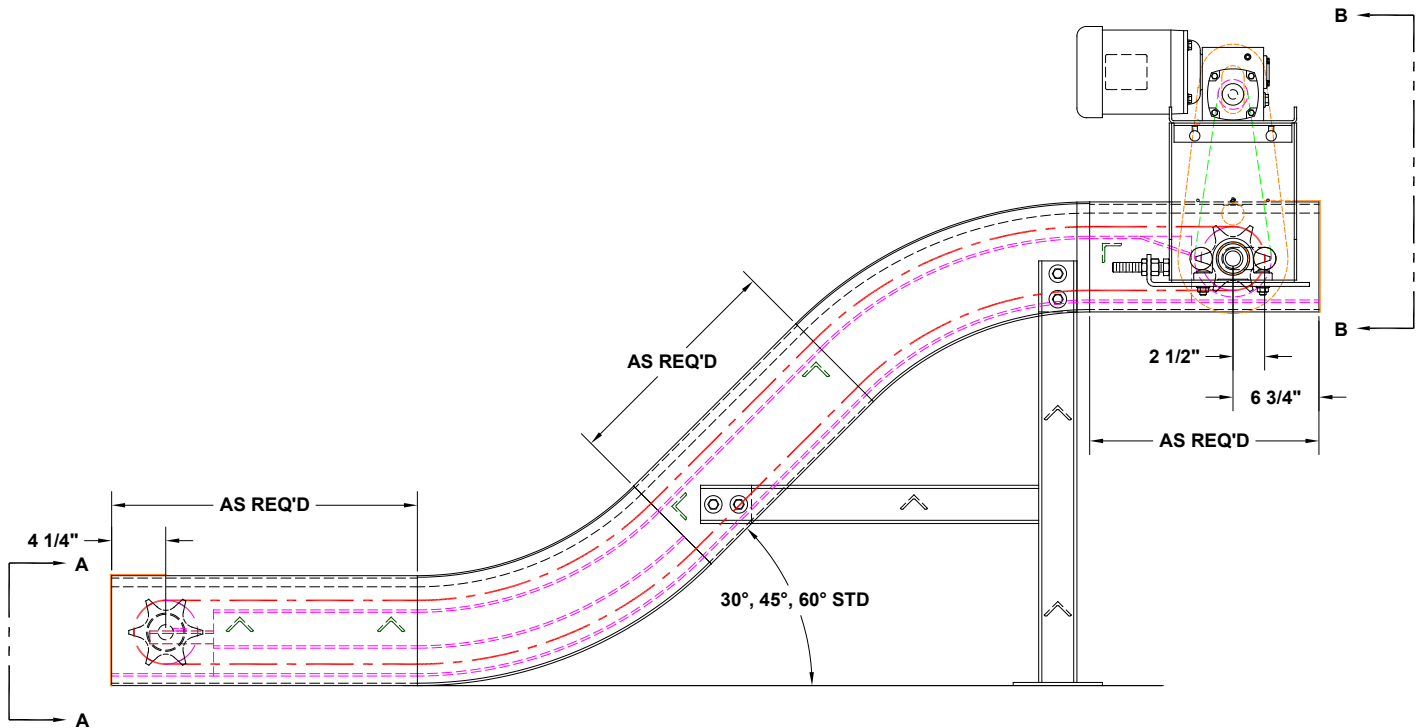
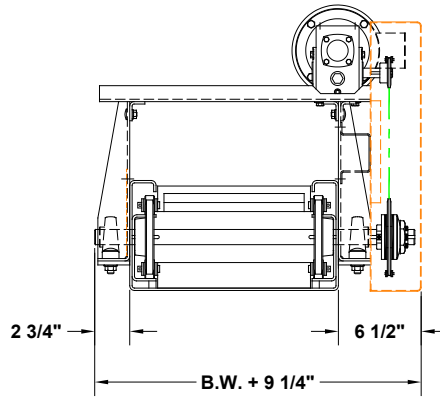
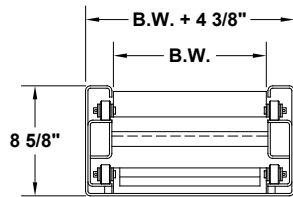


# MODEL 670

## DRAG CHAIN CONVEYOR



735 Industrial Loop Road • New London, WI 54961-9612 • 920-982-6600 • Fax 920-982-7750 • Toll Free 800-558-3616

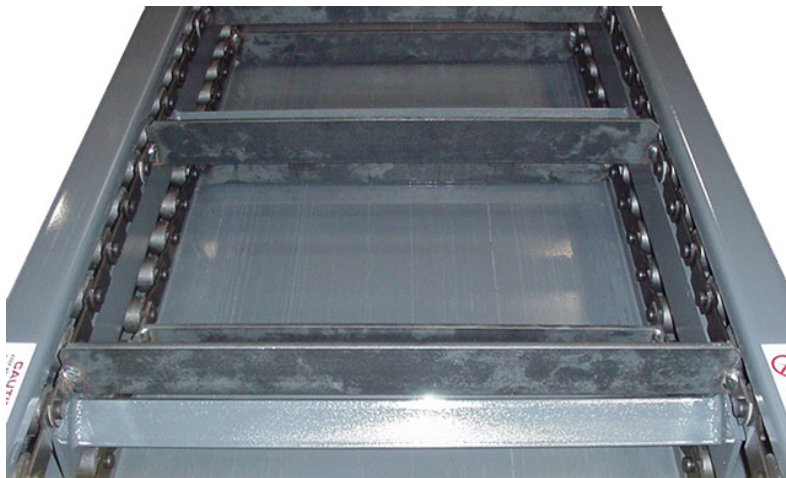
Website: [www.titanconveyors.com](http://www.titanconveyors.com) • Email: [sales@titanconveyors.com](mailto:sales@titanconveyors.com)

# MODEL 670

## DRAG CHAIN CONVEYOR



The **Model 670 Drag Flight Chain Conveyor** is ideal for handling cast iron, fine chips, scrap or sludge that would jam a Hinged Steel Belt unit. The 2-1/2" pitch chain has drag flights welded on 12-1/2" centers. Various configurations, lengths and belt widths are available.



MODEL 670 DRAG CHAIN STEEL BELT MODELS		
	Standard	Options
<b>Belt Width</b>	4", 6", 8", 10", 12", 14", 16", 18", 24"	30", 36", 42"
<b>Belt Type</b>	2-1/2" pitch chain	
<b>Curves</b>	30°, 45°, 60°	
<b>Frame</b>	8-5/8" deep formed 10 ga.	
<b>Drive</b>	1/2 H.P. 230/460/3/60	3/4, 1, 1-1/2, 2 HP 115/230/1/60, 575/3/60, TEFC, severe duty, inverter duty, brake motor
<b>Drive Sprocket</b>	5 Tooth, 4.25" P.D.	
<b>Chain Pull</b>	2,500#	2,500#
<b>Optional</b>		
Drive location, H.P., fixed and variable speed, controls, tanks, chutes, plumbing, top covers, chip suppressors, casters, liquid tight bottom pans, paint, supports		
Many other options available, consult factory representative		

**NOTE: Specifications subject to change without notice**