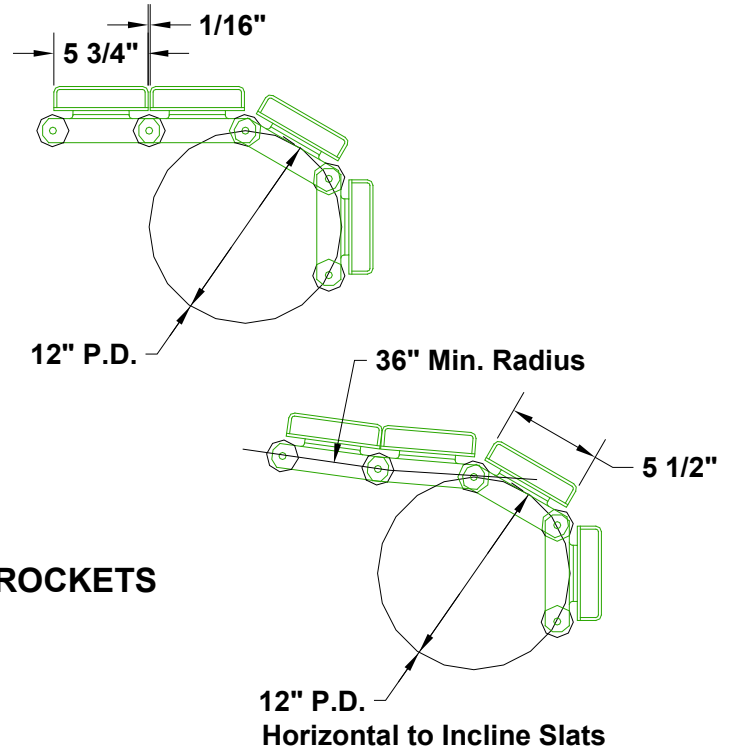
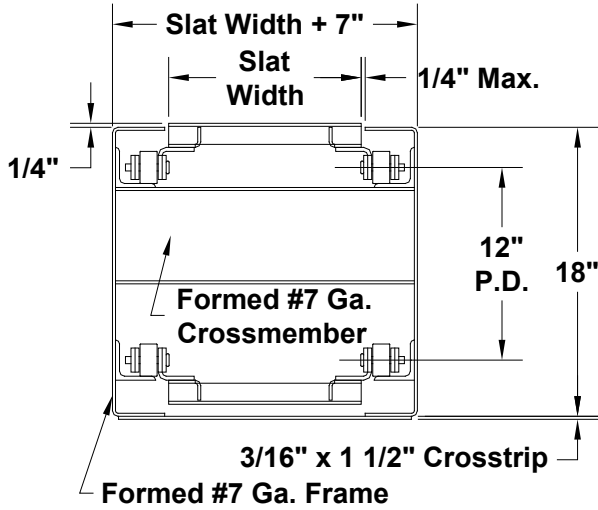


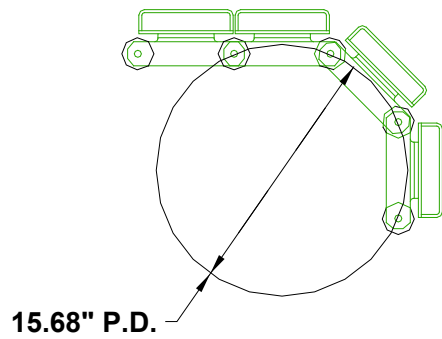
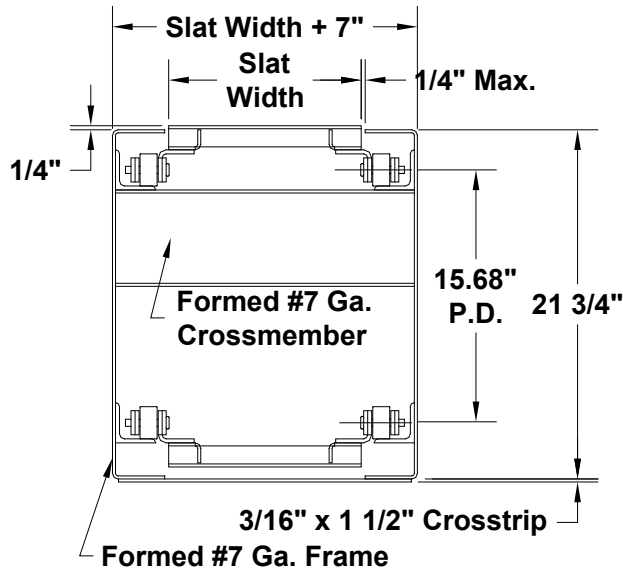
MODEL 696

SLAT CONVEYOR

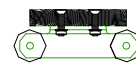
STANDARD FRAME WITH 12" P.D. SPROCKETS



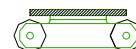
STANDARD FRAME WITH 15.68" P.D. SPROCKETS



1" Thk. Hardwood Slat



3/8" or 1/2" R. Slats

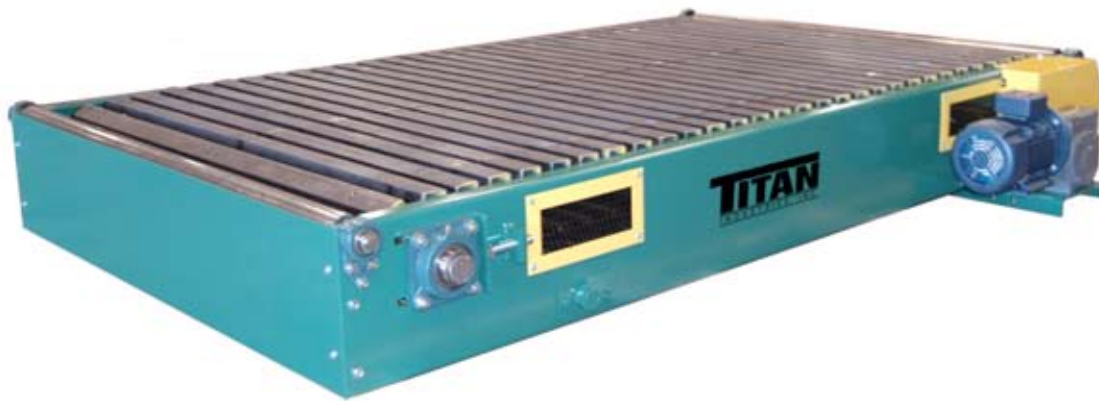


735 Industrial Loop Road • New London, WI 54961-9612 • 920-982-6600 • Fax 920-982-7750 • Toll Free 800-558-3616

Website: www.titanconveyors.com • Email: sales@titanconveyors.com



MODEL 696
SLAT CONVEYOR



When your material handling requirements call for a unique solution, the Titan Model 696 Slat Conveyor should be considered. Standard construction (a 7 gauge frame) is extremely heavy-duty to exceed the most demanding requirements for industrial usage. Units can be supplied with 4" pitch or 6" pitch heavy-duty slat conveyor chain with attachments every pitch. Slats come in standard formed 7 gauge design, but can also be furnished in other designs such as formed V, heavy flat plate, attachments for lugs or fixtures or even different materials such as wood. The Model 696 comes with overload protection, screw type take-ups and accumulation, assembly, side loading and unloading and frequent stop/start applications. Titan can modify the standard unit or custom design a unit to meet your requirements.

MODEL 696
SPECIFICATIONS

DRIVE:..... H.P. to Suit Application
 SPEED: 30 F.P.M.
 SLATS: Formed 7 Gauge
 CHAIN: Heavy-Duty 6" Pitch
 SPROCKETS: 6 Tooth, 12" Pitch Diameter
 FRAME: Formed 7 Gauge
 BEARINGS: Industrial Relube
 PAINT: One Coat Industrial Enamel

NOTE: Specifications subject to change without notice