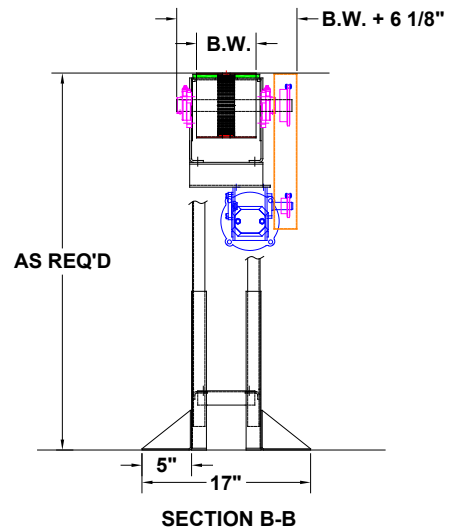
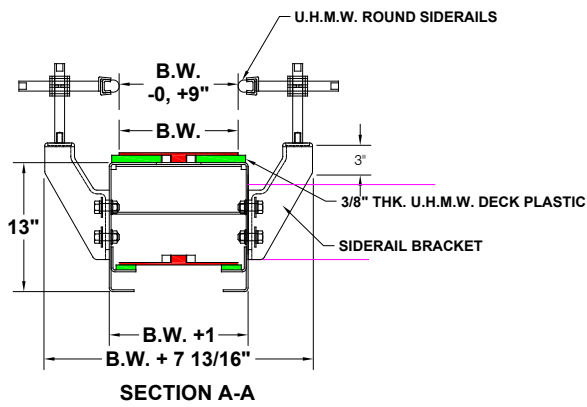
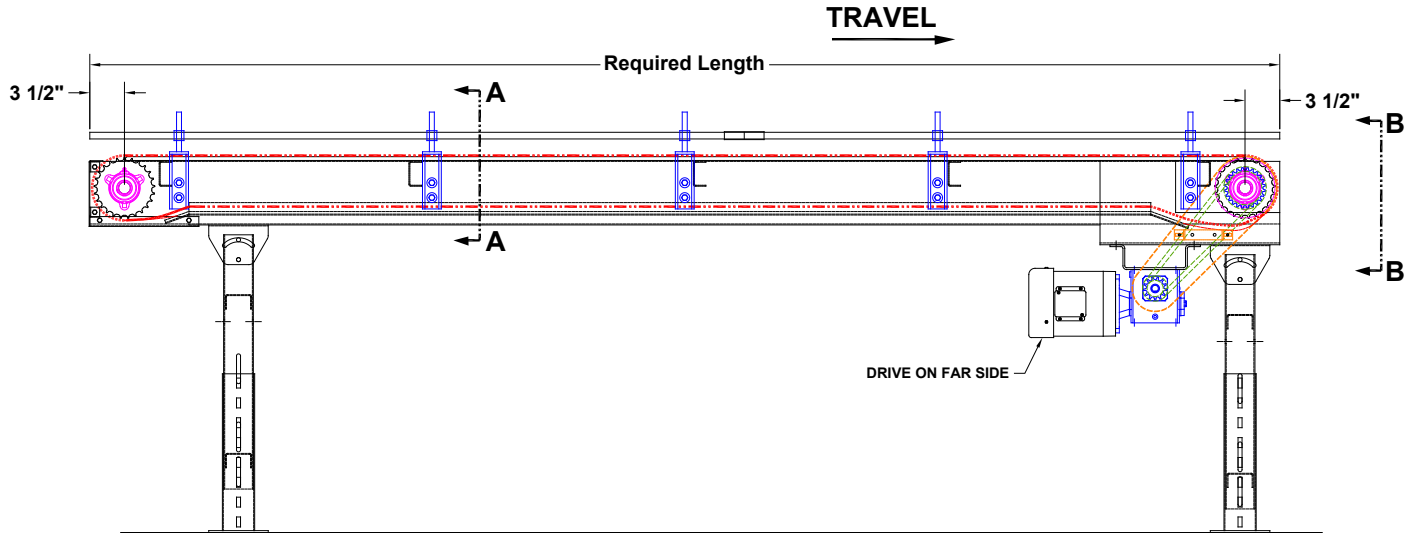
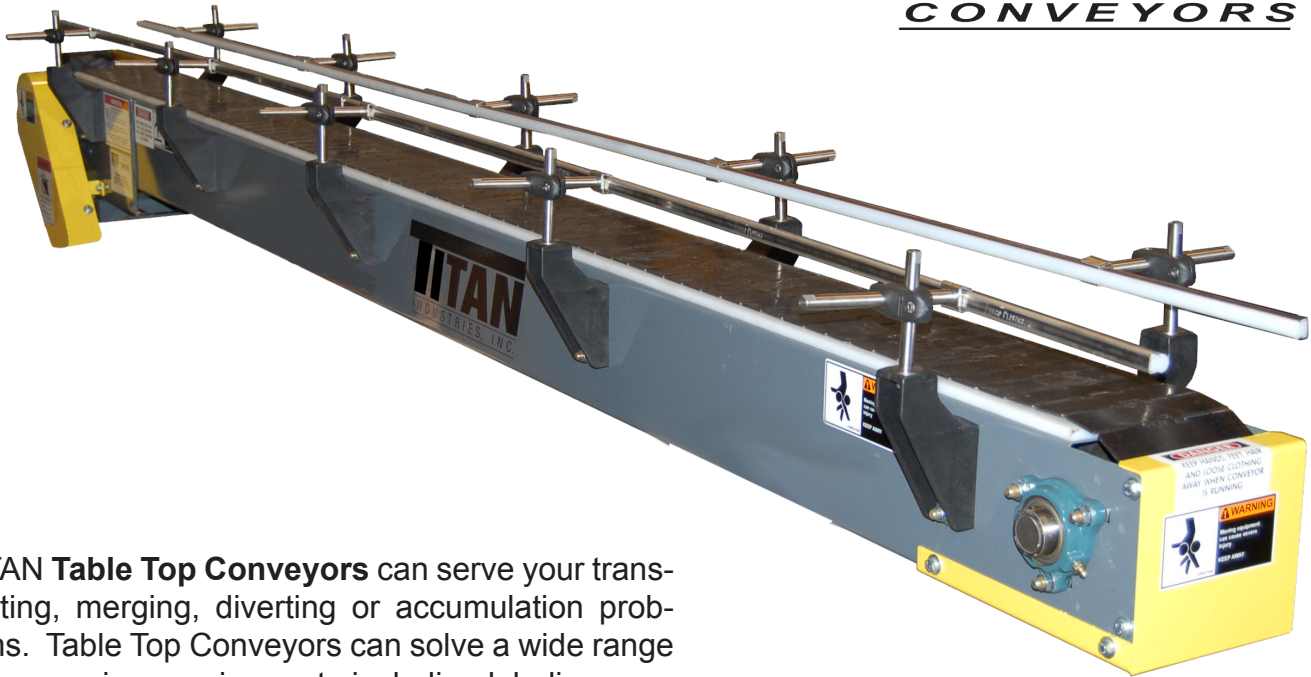


# TABLE TOP CONVEYOR



# TABLE TOP CONVEYOR



TITAN Table Top Conveyors can serve your transporting, merging, diverting or accumulation problems. Table Top Conveyors can solve a wide range of processing requirements including labeling, production inspection, product filling and weighing. Stainless Steel options are available for direct food contact and clean room handling.

Titan offers a variety of belt widths from 3 1/4" to 12" wide in Delrin thermoplastic, carbon steel, and stainless steel. Bottom mount drive is standard with other drive locations available depending upon your needs.



MODEL TABLE TOP	
STANDARD	
Belt Widths	3 1/4", 4", 4 1/2", 6", 7-1/2"
Belt Type	Plastic, carbon steel or stainless
Lengths	Per application
Curves	Per application
Drive	1/2 H.P. 230/460/3/60
Frame	7" deep formed 12 ga.
OPTIONS	
Stainless construction, Interlox belt, customized siderails, Bottom or side mount drive, Fixed speeds - specify speed required, variable speed with DC motor and SCR controller or AC inverter, Paint choice	

**NOTE: Specifications subject to change without notice**