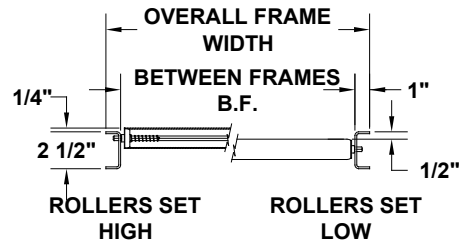
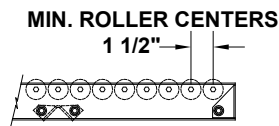


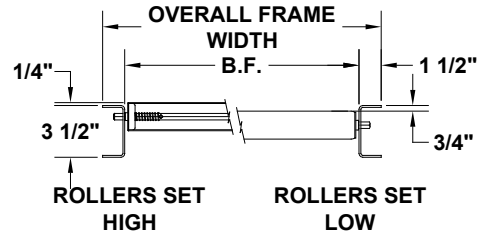
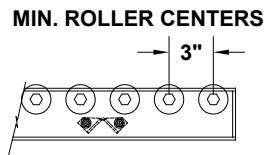
GRAVITY ROLLER CONVEYOR



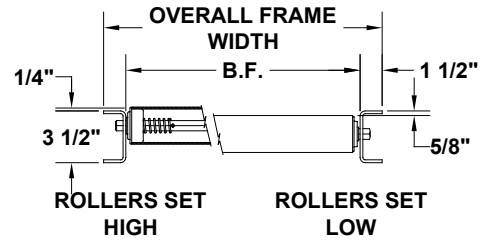
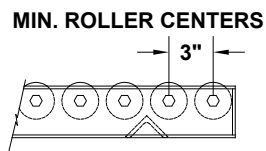
MODEL 413



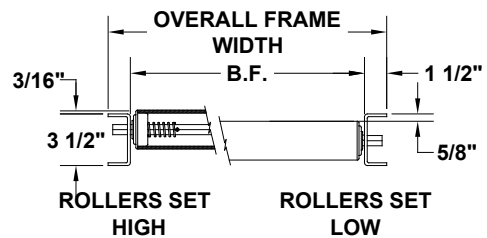
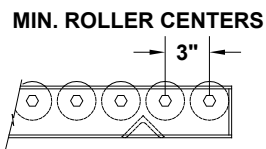
MODEL 419



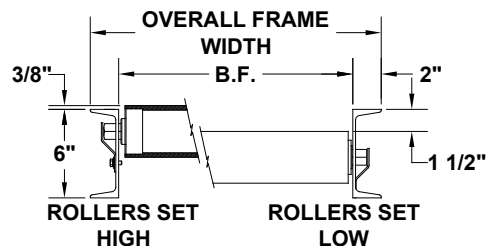
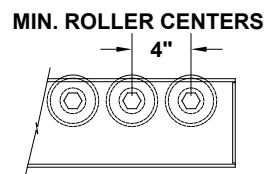
MODEL 425



MODEL 426



MODEL 435



NOTE: Specifications subject to change without notice

GRAVITY ROLLER CONVEYOR

GRAVITY ROLLER CONVEYOR SPECIFICATIONS

MODEL NUMBER	Between Frame	ROLLER	AXLE	FRAME	MINIMUM CENTERS	ROLLER RATING*
413	10" to 22"	1-3/8" Dia. x 18 Gauge	5/16" Hex	Formed 12 Gauge	1-1/2"	50 lbs.
419	9" to 40"	1.9" Dia. x 16 Gauge	7/16" Hex	Formed 10 Gauge	3"	250 lbs.
425	9" to 72"	2-1/2" Dia. x 11 Gauge	11/16" Hex	Formed 7 Gauge	3"	625 lbs.
426	9" to 96"	2-5/8" x 7 Gauge	11/16" Hex	Formed 7 Gauge	3"	650 lbs.
435	9" to 120"	3-1/2" x .300 wall	1-1/16" Hex	6" @8.2# Structural Channel	4"	2500 lbs.

Roller Centers Available

Model 413: 1-1/2", 3", 4-1/2", 6", 9", 12"

Model 419-425-426: 3", 4-1/2", 6", 9", 12"

Model 435: 4", 6", 8", 12"

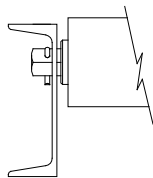
Optional

Siderails - 1", 3-1/2", 6" fixed channel, 3-1/2" high adjustable, casters, galvanized, coated, plastic or stainless steel rollers, pop-up stops - manual or air operated, fixed end stops, manual gates, paint

*Roller Ratings Vary with Between Frame Dimensions

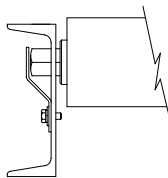
ROLLER RETENTION

STYLE #1



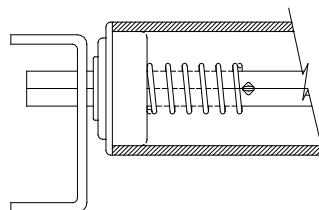
COTTER PIN

STYLE #2



RETAINING STRIP

STYLE #3



SPRING LOADED

**NOTE: NOT AVAILABLE
ON MODEL #435**



735 Industrial Loop Road • New London, WI 54961-9612
920-982-6600 • Fax 920-982-7750 • Toll Free 800-558-3616
Website: www.titanconveyors.com • Email: sales@titanconveyors.com

