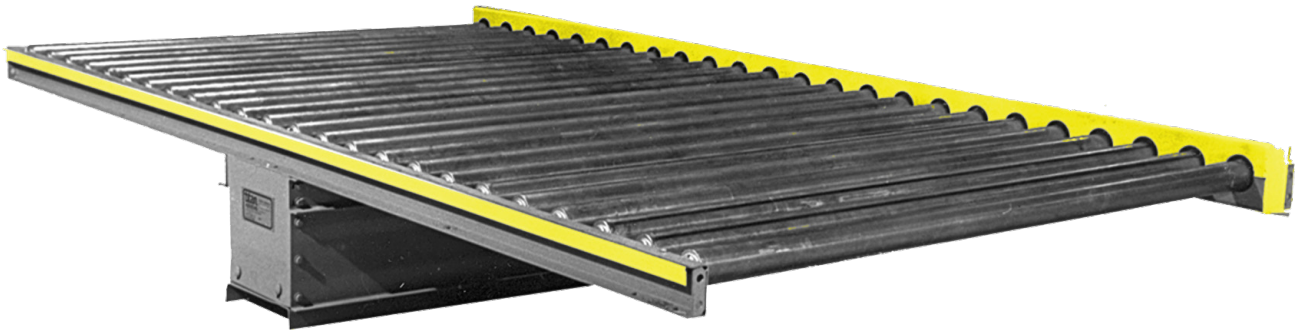


MODEL 526

CHAIN DRIVEN LIVE ROLLER



Titans' **Model 526** is designed for handling pallets, skids, drums. The unit incorporates a number 50 chain with a roll-to-roll drive, with #60 chain optional for heavier loads. The frame is heavy formed 7 gauge construction with a one piece chain guard. Rollers are 2-5/8" diameter x 7 gauge (**580 lb. capacity**). The standard drive is a 3/4 H.P. with 30 F.P.M. roller speed. A wide range of standard effective widths are available. Standard roller spacing is 5", with 2-13/16", 3-19/32", 4-3/8", and 5-15/16" centers available with #50 chain. Floor supports are optional. The Model 526 comes in lengths to suit with a minimum length of 4' long. Consult the factory for further details.



Special 526 with 3 strand chain transfer

MODEL 526 CHAIN DRIVEN LIVE ROLLER CONVEYOR SPECIFICATIONS

	Standard	Options
Effective Widths	15" to 80"	Specify
Lengths	5' min.	3' min. - max. per application
Roller Size	2 5/8" dia. x 7 ga. with 11/16" hex shaft	
Roller Center	5"	2-13/16", 3-19/32", 4-3/8", 5-15/16", 10"
Frame	Formed 7 ga.	
Drive	3/4 H.P. 230/4603/60	1, 1-1/2, 2 H.P. 115/230/1/60, 575/3/60, severe duty, inverter duty, brake motor
Chain Drive	#50	#60

Optional

Roller Space - Consult factory, Roller Center - Consult Factory, Drive locations: as needed, Galvanized or stainless construction, H. P. , Speeds, Variable speed, Controls, Coated rollers, Paint, 2, 3 or 4 strand chain transfers, Pallet lifts, Pallet jack plates for side or end load, "C" Face brake and Fixed end stop, Pallet pusher, Walk plates, Rollers set low, UHMW sleeves, Accumulation sleeves, Urethane sleeves, Knee braces, Air operated blade stop, Supports - 6" @ #8.2 structural channel

NOTE: Specifications subject to change without notice

MODEL 526

CHAIN DRIVEN LIVE ROLLER CONVEYOR

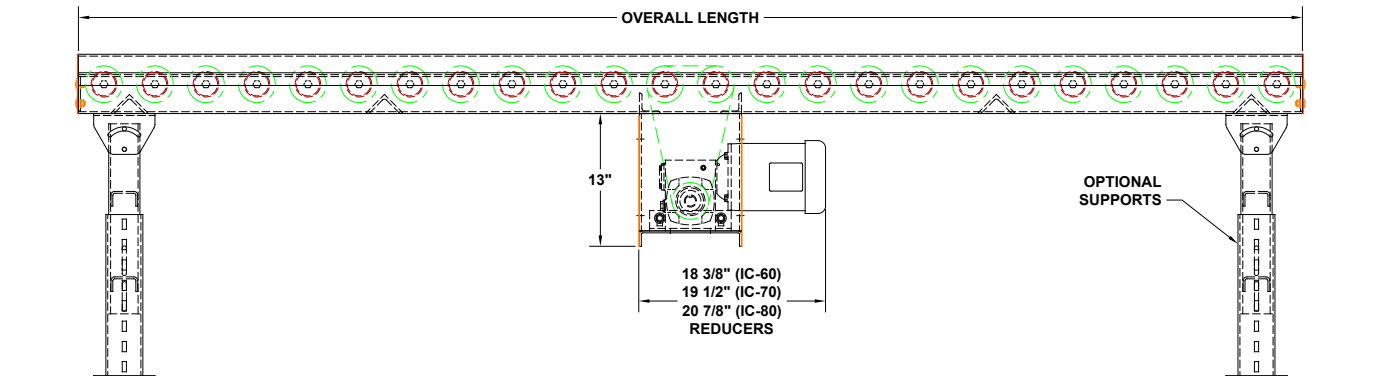


FIGURE "B"

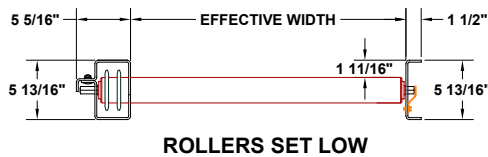


FIGURE "C"

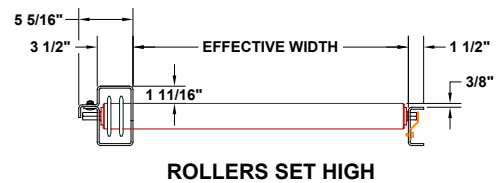


FIGURE "D"

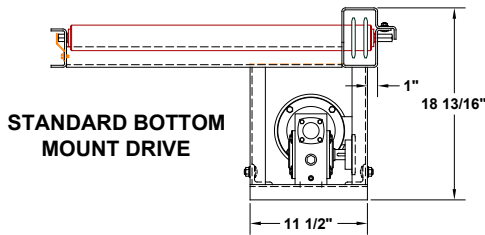


FIGURE "E"

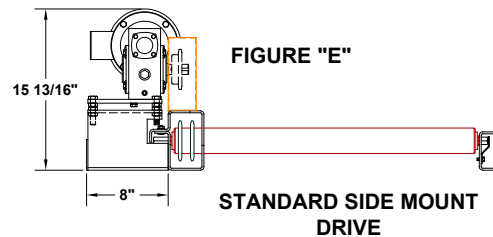


FIGURE "F"

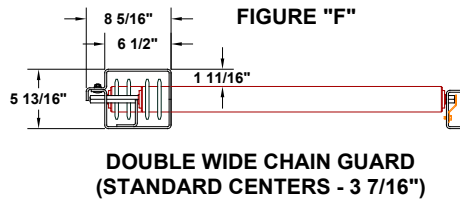


FIGURE "G"

