



Industrial Conveyor Specialists

**Installation, Maintenance & Parts Manual
For**

**MODEL 105
ROLLER BED CONVEYOR**

For Additional copies of this manual, please visit our website at
www.titanconveyors.com

Go to Info Center, Select the Maintenance Manual Tab
and select the manual for your model conveyor
or click on the link below.

<https://www.titanconveyors.com/info-center#823236-maintenance-manuals>



**Titan Conveyors
735 Industrial Loop Road
New London, WI 54961
920-982-6600
800-558-3616
FAX 920-982-7750**

**E-mail: sales@titanconveyors.com
Website: www.titanconveyors.com**

Serial No.

Page 2	Table of Contents
	Warranty
Page 3	Safety/Safety Decals
Page 4	Introduction
	I. Receiving
	II. Installation
	Support Assembly
Page 5	Frame Assembly
Page 6	Component Checklist
	Belt Installation
Page 7	Belt Threading Chart
Page 8	III. Maintenance
	Belt Tracking
Page 9	Motors
Page 10	Reducers
Page 11	Bearings
Page 12	V-Belt & Sheaves
Page 13	Chain & Sprockets
Page 14	Model 105 Blow Apart Drawing
Page 15	Model 105 Center Drive & Take-up Blow Apart Drawing

Warranty

(A) Seller warrants that the material in and the workmanship on the equipment manufactured by TITAN will be free from defects at time of shipment. If during the first year from the date of shipment, the Buyer establishes to the seller's satisfaction that any part or parts manufactured by TITAN were defective at the time of shipment, TITAN will, at its own expense, repair or replace (but not install) replacement parts. For a time purpose of this warranty, one year will constitute 2080 hours of operation based on an 8 hour day. Sellers liability under this warranty is limited to replacement parts only and the seller will make no allowance for corrective work done unless agreed to by the seller in writing. Charges for correction of defects by others will not be acceptable, unless so authorized in writing, prior to the work being performed, by an officer of the company. Damage caused by deterioration due to extraordinary wear and tear (including, but not in limitation, use said equipment to handle products of a size, weight and shape or at speeds or methods which differ from information originally provided), chemical action, wear caused by the presence of abrasive materials or by improper maintenance or lubrication or improper storage prior to installation, shall not constitute defects. Failure to install equipment properly shall not constitute defects. Warranty does not cover consumable items. Warranty does not cover belt tracking or adjustment at installation or periodic adjustment that may be required during normal operation. Refer to the maintenance manual for belt tracking instructions.

(B) Seller has made no representation, warranties, or guarantees, expressed or implied, not expressly set forth on above paragraph. Seller shall not be liable hereunder for any consequential damages included but not in limitation, damages which may arise from loss of anticipated profits or production or from increased cost of operation or spoilage of material.

(C) The components used in manufacture of said equipment which were manufactured by others will carry such manufacturers' customary warranty, which seller will obtain for buyer upon request.

(D) No representative of TITAN has been conferred with any authority to waive, alter, vary or add to the terms of warranty state herein, without prior authorization in writing executed by an officer of the company.

(E) The foregoing is in lieu of any and all other warranties, expressed or implied, or those extending beyond the description of the product.

INTRODUCTION

The management and employees of Titan Industries thank you for specifying Titan equipment. This manual will give you the basic information to install and maintain your equipment. If special circumstances or questions come up call Titan at 920-982-6600.

I. RECEIVING

Upon delivery of your Titan conveyor, check the packing slip or bill of lading accompanying the unit. If any components are missing, contact Titan IMMEDIATELY with a description of the missing components along with the conveyor serial number(s). The serial number is found on the serial plate normally positioned by the drive.

Check the unit(s) over carefully upon arrival for damage. If you find any damage note it on the bill of lading. **YOU MUST** also file a claim **IMMEDIATELY** with the carrier.

II. INSTALLATION

- ✓ **WEAR SAFETY GLASSES, SAFETY SHOES, AND GLOVES.**
- ✓ **HAVE AREA AROUND INSTALLATION SITE CLEARED OF DEBRIS.**
- ✓ **LOCKOUT POWER TO CONVEYOR(S) UNTIL START-UP.**
- ✓ **LOOK OUT FOR SHARP EDGES WHILE HANDLING CONVEYOR COMPONENTS.**
- ✓ **BE CAREFUL IN AND AROUND THE CONVEYOR(S) DURING INSTALLATION. ALSO, BE AWARE OF OTHERS IN THE AREA.**
- ✓ **ONLY ALLOW QUALIFIED PERSONNEL TO ASSEMBLE AND INSTALL CONVEYORS.**

SUPPORT ASSEMBLY

Standard supports are always shipped assembled. See FIGURE 1 for a component breakdown.

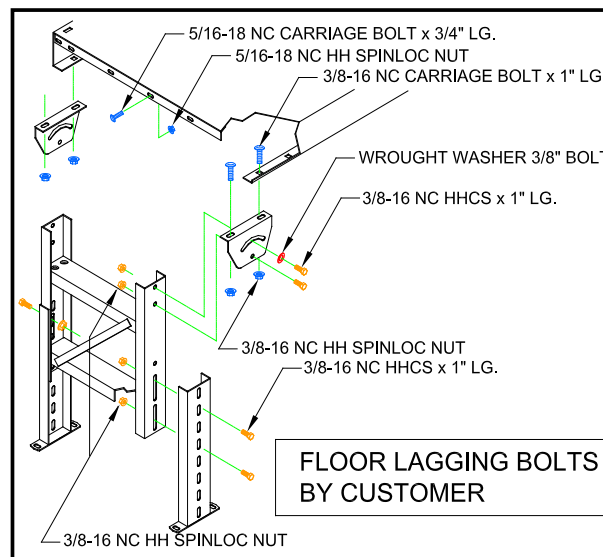


FIGURE 1

FRAME ASSEMBLY

- NOTE: If several sections of frame are to be joined in a particular sequence, they will be factory matched marked. See FIGURE 2.**

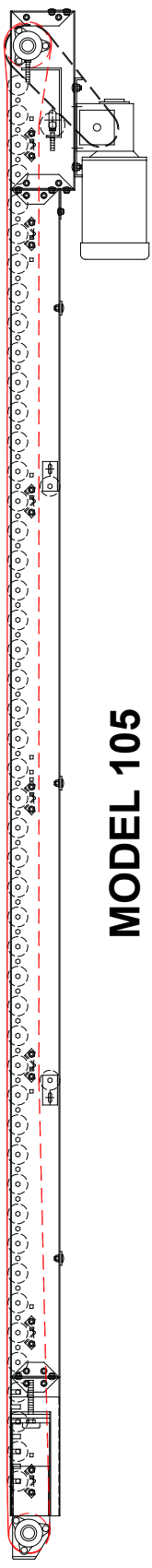


2. Layout a line on the floor to represent the centerline of the conveyor. As frame sections are bolted together make sure the frame remains centered on the line.
3. Generally, if there are short sections (1', 2' or 4'), position them adjacent to the drive section.
4. If a center take-up or center drive and take-up section has been provided, position the section as close to the center of the conveyor as possible.
5. Bolt together conveyor frames finger tight. Square frames and make sure all frames line up with adjacent section before securing all bolts. See FIGURE 3.



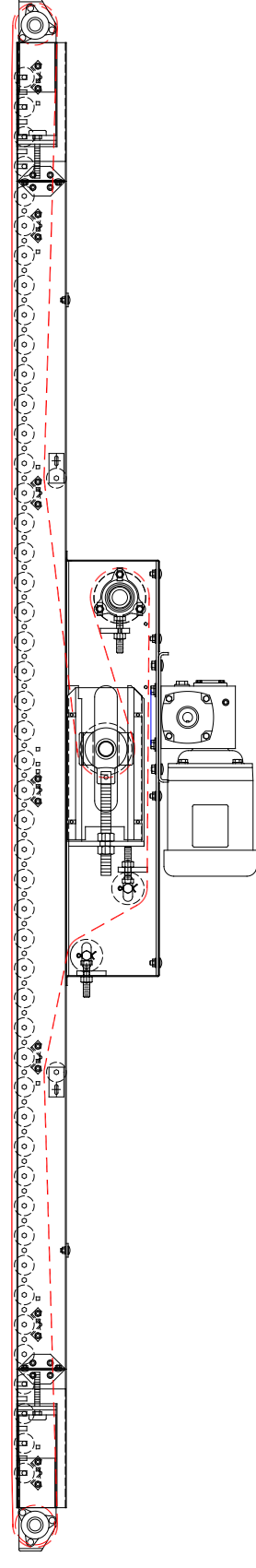
Belt Threading

BELT TRAVEL



MODEL 105

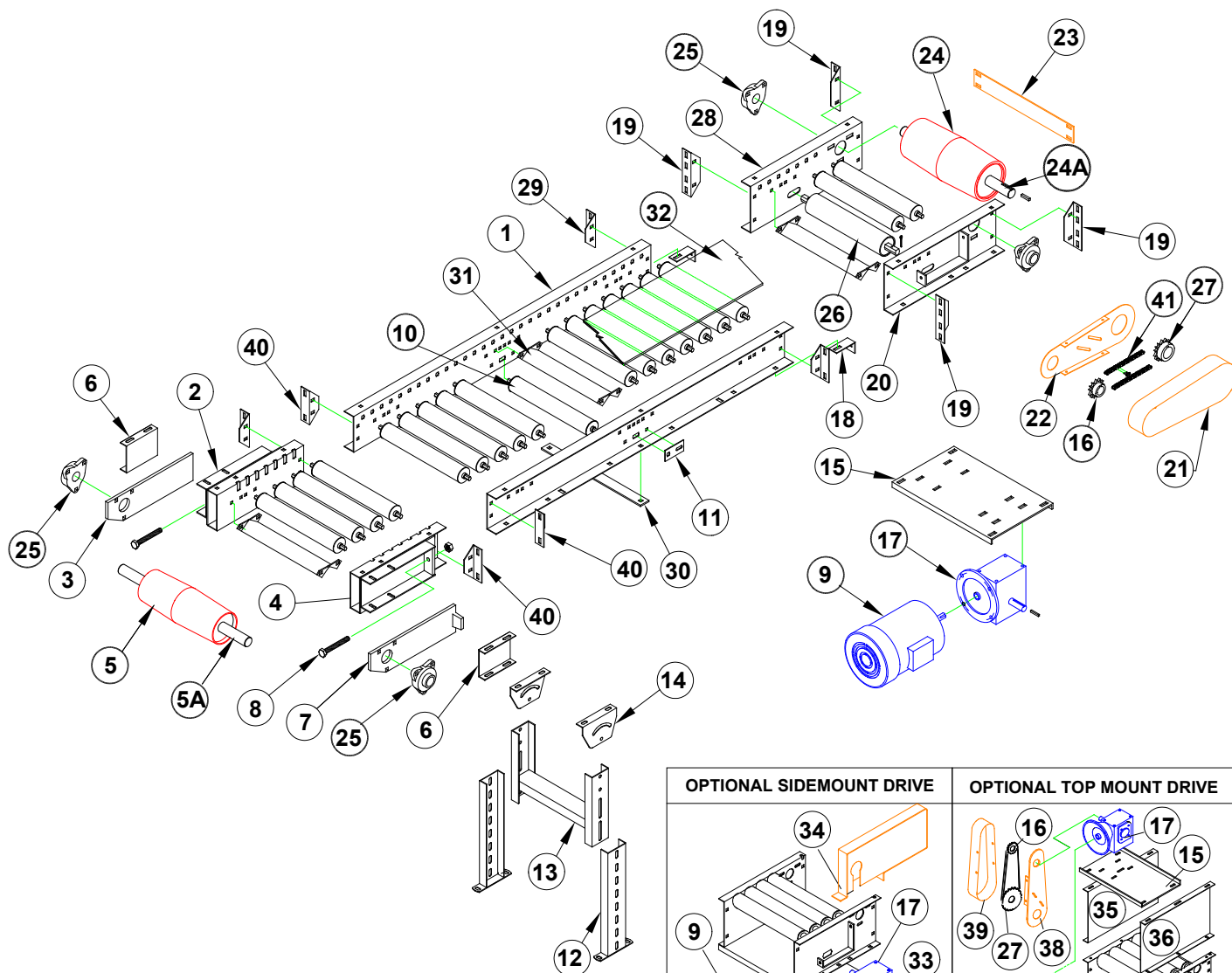
BELT TRAVEL



**MODEL 105
CENTER DRIVE & TAKE UP**

FIGURE 6

MODEL 105 ROLLER BED BELT CONVEYOR

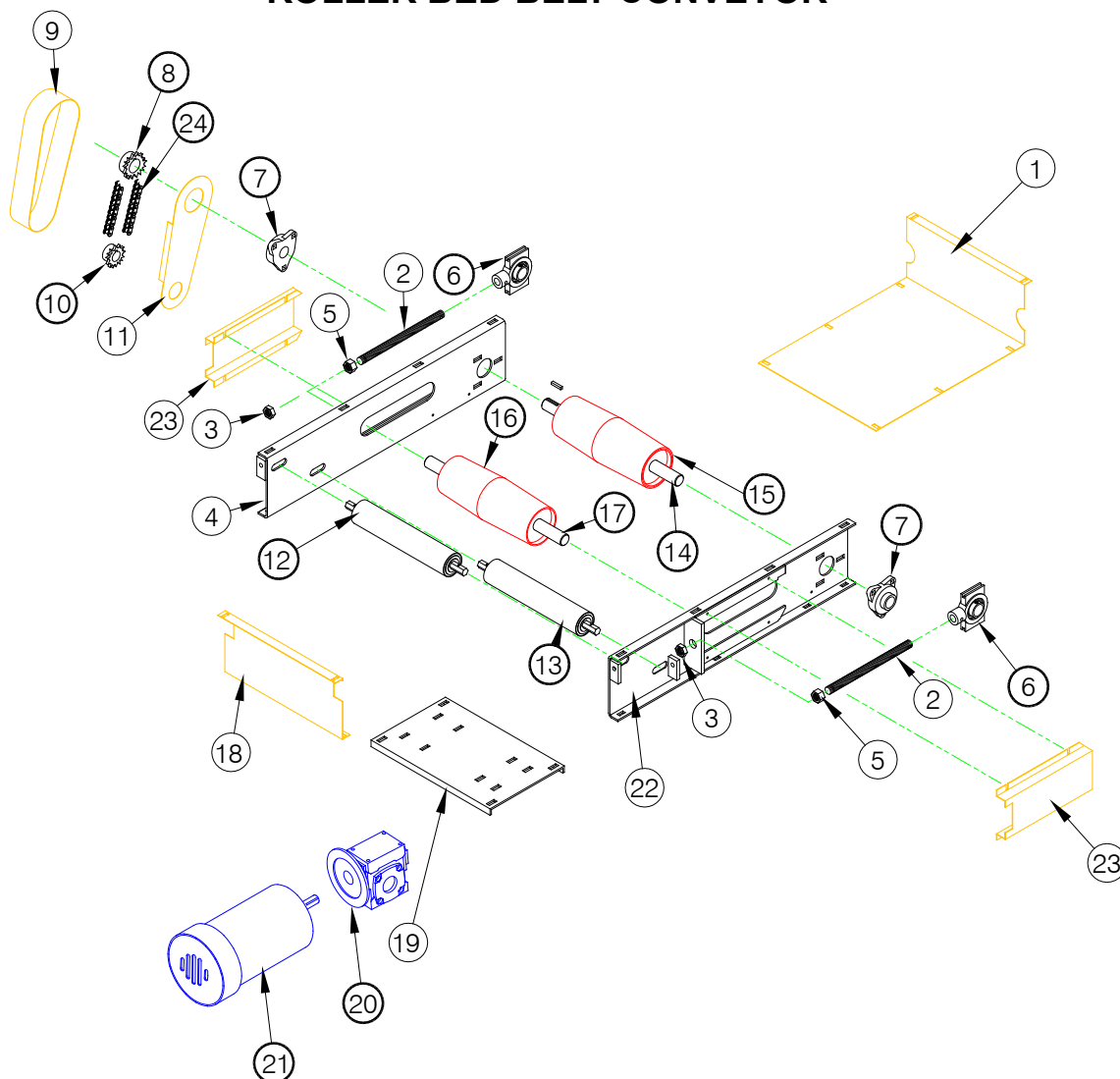


OPTIONAL SIDEMOUNT DRIVE

OPTIONAL TOP MOUNT DRIVE

- | | | |
|--------------------------------|------------------------------------|-------------------------------------|
| 1. INTERMEDIATE FRAME | 15. MOTOR BASE | 29. INTER. CONNECTOR BRACKET |
| 2. INFEED FRAME L/H | 16. • DRIVE SPROCKET | 30. LOWER FRAME SPREADER |
| 3. TAKE UP BAR L/H | 17. • REDUCER | 31. FRAME SPREADER |
| 4. INFEED FRAME R/H | 18. HEAD SECTION SPLICE ANGLE | 32. • BELT |
| 5. • TAIL PULLEY | 19. CONNECTOR BRACKET DRIVE | 33. SIDE MOUNT MOTORBASE |
| 5A. • TAIL PULLEY SHAFT | 20. HEAD PLATE R/H | 34. SIDE MOUNT DRIVEGUARD |
| 6. RETAINER CHANNEL | 21. GUARD FRONT | 35. TOP MT. DRIVE, ADAPTOR PLT. L/H |
| 7. TAKE UP BAR R/H | 22. GUARD BACK | 36. TOP MT. DRIVE, ADAPTOR PLT. R/H |
| 8. TAKE UP BOLT | 23. DRIVE SPREADER | 37. LOWER GUARD TOP MT. DRIVE |
| 9. • MOTOR | 24. • DRIVE PULLEY | 38. GUARDBACK TOP MT. DRIVE |
| 10. • RETURN ROLLER | 24A. • DRIVE PULLEY SHAFT | 39. GUARD TOP MT. DRIVE |
| 11. RETURN ROLLER BRACKET | 25. • 3 BOLT FLANGE BEARING | 40. CONNECTING BRACKET |
| 12. LOWER SUPPORT | 26. • SNUB ROLLER | 41. • ROLLER CHAIN |
| 13. UPPER SUPPORT | 27. • DRIVEN SPROCKET | |
| 14. SMILE BRACKET | 28. HEAD PLATE L/H | |

- **RECOMMENDED SPARE PARTS TO BE STOCKED AT YOUR LOCATION**



1. LARGE GUARD C.D.& T.U.
2. THREADED ROD
3. HEX JAM NUT
4. C.D.& T.U. PLATE L/H
5. HEX NUT
6. • **TAKE-UP BEARING 1 3/16" DIA.**
7. • **BEARING, 3 BOLT FLANGE**
8. • **DRIVEN SPROCKET**
9. GUARD FRONT
10. • **DRIVE SPROCKET**
11. GUARD BACK
12. • **SNUB ROLLER**
13. • **SNUB ROLLER**
14. • **DRIVE SHAFT**
15. • **DRIVE PULLEY**
16. • **TAKE-UP PULLEY**
17. • **TAKE-UP SHAFT**
18. SMALL GUARD C.D.& T.U.
19. MOTOR BASE
20. • **REDUCER**
21. • **MOTOR**
22. C.D.& T.U. PLATE R/H
23. TAKE-UP GUARD
24. • **ROLLER CHAIN**

RECOMMENDED SPARE PARTS TO BE STOCKED AT YOUR LOCATION