

Company

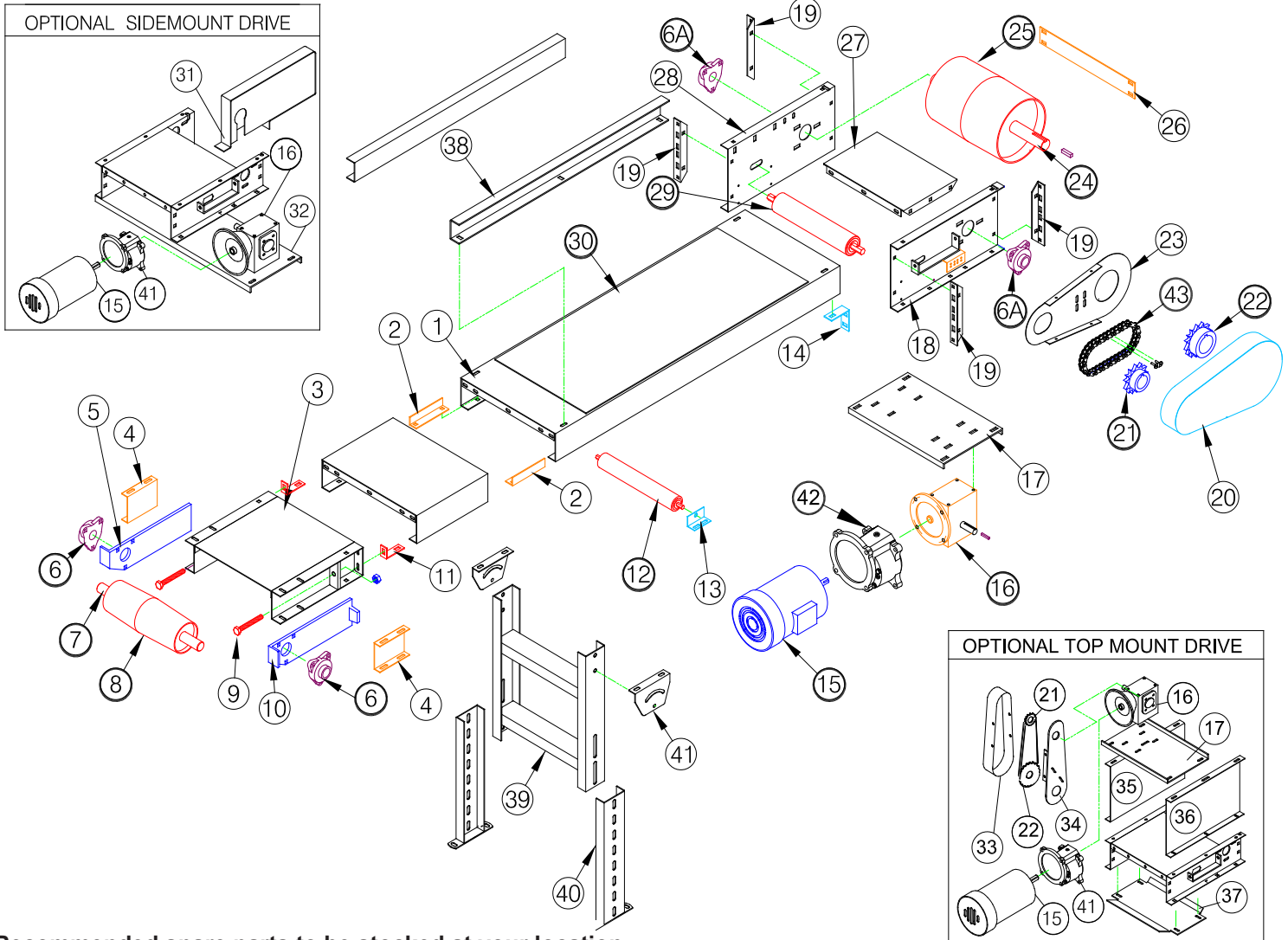
Phone

Contact

Conveyor
Serial Number

E-mail

To Request a Quote for Spare Parts - Fill in the Information below & Quantity of each Part & Click on the Email Button



• Recommended spare parts to be stocked at your location

Part

Number - Description - Qty.

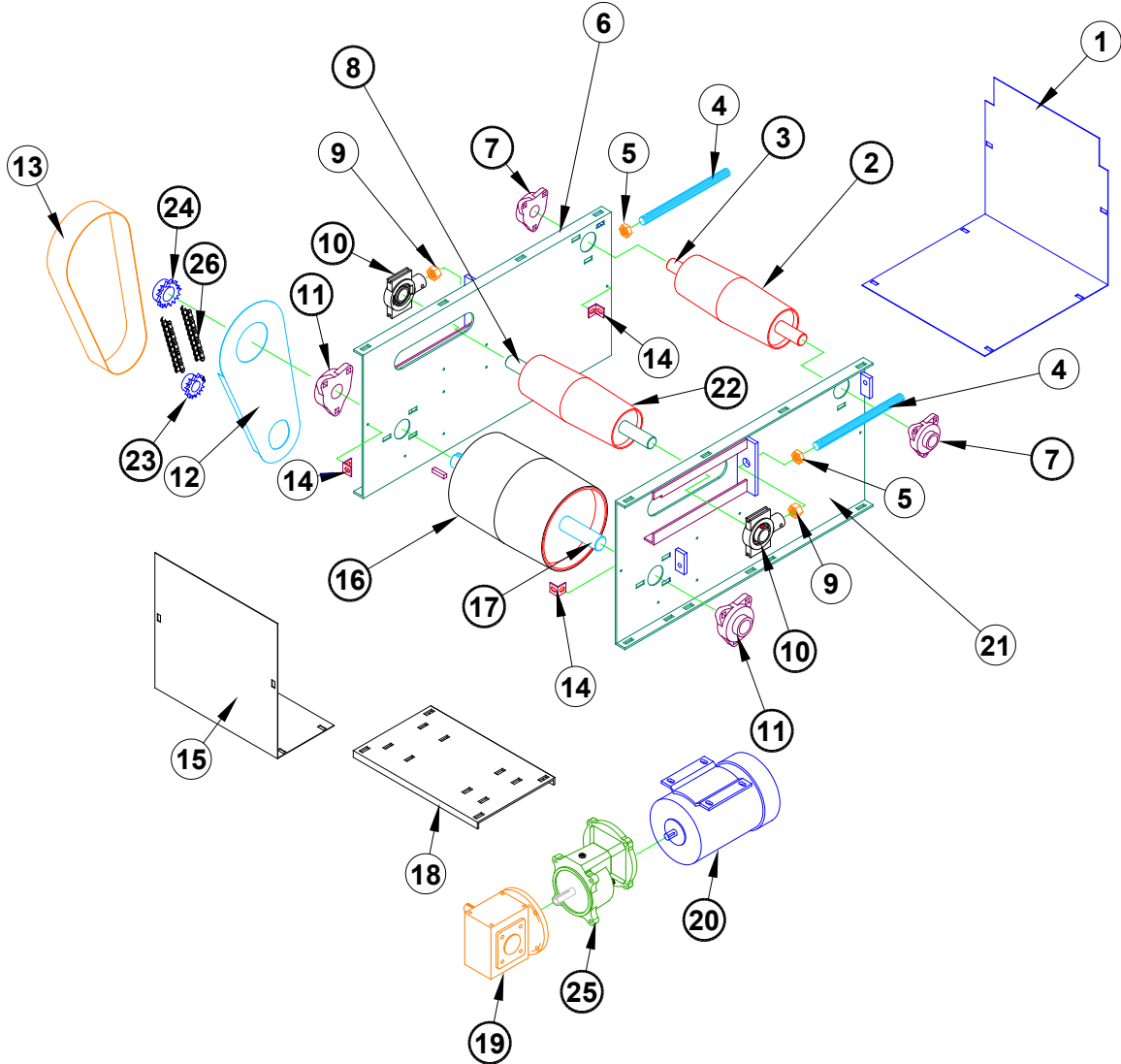
- 6. 1 3/16" BEARING, 3 BOLT FLANGE
- 6A 1 7/16" BEARING, 3 BOLT FLANGE
- 7. INFEED SHAFT
- 8. INFEED PULLEY
- 12. RETURN ROLLER
- 15. MOTOR
- 16. REDUCER
- 21. DRIVE SPROCKET
- 22. DRIVEN SPROCKET
- 24. DRIVE SHAFT
- 25. DRIVE PULLEY
- 29. SNUB ROLLER
- 30. BELT
- 42. RATIO MULTIPLIER
- 43. ROLLER CHAIN

Other Parts

- 1. INTERMEDIATE SUPPORT
- 2. SUPPORT SPLICE ANGLE
- 3. INFEED SECTION
- 4. INFEED RETAINER CHANNEL
- 5. CAST TAKE-UP L/H
- 9. ADJUSTMENT BOLT
- 10. CAST TAKE-UP R/H
- 11. HEAD SECTION SPLICE ANGLE
- 13. RETURN ROLLER BRACKET
- 14. DRIVE SECTION SPLICE ANGLE
- 17. MOTOR BASE
- 18. HEADPLATE R/H
- 19. CONNECTING BRACKET
- 20. GUARD FRONT

- 23. GUARD BACK
- 26. DRIVE SPREADER
- 27. DRIVE SECTION DECK
- 28. HEAD PLATE L/H
- 31. SIDEMOUNT DRIVE GUARD
- 32. SIDEMOUNT DRIVE MOTOR BASE
- 33. GUARD FRONT TOP MT. DRIVE
- 34. GUARD BACK TOP MT. DRIVE
- 35. TOP MT. DRIVE HEAD PLATE L/H
- 36. TOP MT. DRIVE HEAD PLATE R/H
- 37. LOWER GUARD TOP MT. DRIVE
- 38. SIDERAIL (OPTIONAL)
- 39. UPPER SUPPORT
- 40. LOWER SUPPORT
- 41. SMILE BRACKET

To Request a Quote for Spare Parts - Fill in the Information below & Quantity of each Part & Click on the Email Button



• Recommended spare parts to be stocked at your location

Part Number	Description	Qty.
2.	• SNUB PULLEY	
3.	• SNUB PULLEY SHAFT	
7.	• 1 3/16" 3 BOLT FLANGE BEARING	
8.	• TAKE-UP SHAFT	
10.	• TAKE-UP BEARING	
11.	• 1 7/16" 3 BOLT FLANGE BEARING	
16.	• DRIVE PULLEY	
17.	• DRIVE SHAFT	
19.	• REDUCER	
20.	• MOTOR	
22.	• TAKE-UP PULLEY	
23.	• DRIVE SPROCKET	
24.	• DRIVEN SPROCKET	
25.	• RATIO MULTIPLIER	
26.	• ROLLER CHAIN	

Other Parts

- 1. LARGE GUARD C.D. & T.U.
- 4. THREADED ROD
- 5. HEX JAM NUT
- 6. C.D. & T.U. PLATE L/H
- 9. HEX NUT
- 12. GUARD BACK
- 13. GUARD FRONT
- 14. L-CLIP
- 15. SMALL GUARD C.D.& T.U.
- 18. MOTOR BASE
- 21. C.D. & T.U. PLATE R/H