

# MODEL 208

## FLOOR TO FLOOR SLIDER BED



If a rugged, industrial material handling system is required, consider using the Titan **Model 208 Floor to Floor Slider Bed conveyor** in your system. The heavy-duty 8" diameter rubber lagged (vulcanized) drive pulley gives that extra capacity for heavier loads and longer incline sections. The optional 3' long power feeder adds flexibility for in-line flow of your product. The standard double noseover is adjustable up to a 30° incline. The Titan Model 208 has all of the rugged design features of our proven Model 108 slider Bed and standard optional equipment is available but if your application requires special modification, Titan Conveyors is willing and happy to accommodate your requirements.

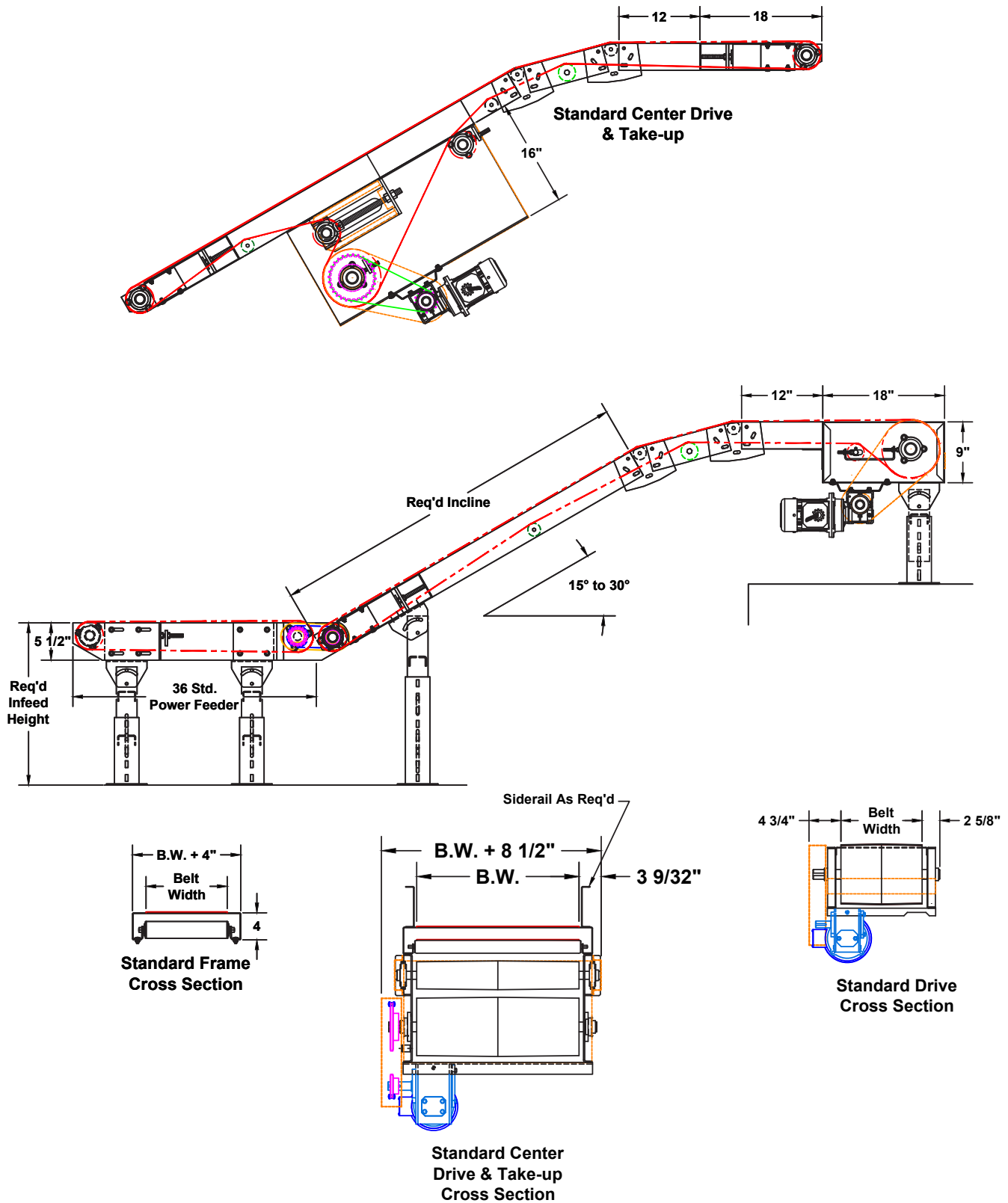


MODEL 208 FLOOR TO FLOOR SLIDER BED CONVEYOR		
	Standard	Options
Belt Widths	12" to 48"	Others available
Lengths	5' min. to 50' max.	3' min to 50' max
Belt Type	Black 2-ply rough top	Gum rubber
Drive	1/2 HP 230/460/3/60	3/4, 1, 1-1/2, 2, 3, HP, 115/230/1/60, TEFC, wahsdown, severe duty, inverter duty, brake motor
Drive Pulley	8" dia. crowned, rubber lagged	
Frame	4" deep formed 12 ga.	
Optional		
H.P., drive location, speed, fixed or variable speed, controls, power feeder, belt type, center drive & take-up, transfer rollers, bolt-on end stop, belt scrapper, galvanized, stainless, siderails, supports, casters, other belt types, siderail skirting, special paint		
Many other options available, consult factory representative		

**NOTE: Specifications subject to change without notice**

# MODEL 208

## FLOOR TO FLOOR SLIDER BED



**TITAN**<sup>TM</sup>  
CONVEYORS

735 Industrial Loop Road • New London, WI 54961-9612  
920-982-6600 • Fax 920-982-7750 • Toll Free 800-558-3616