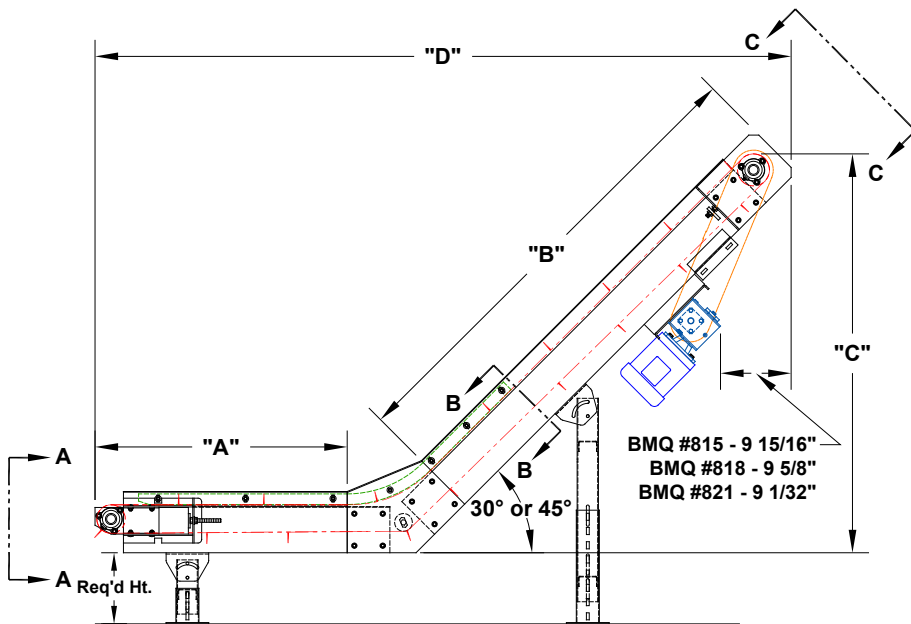
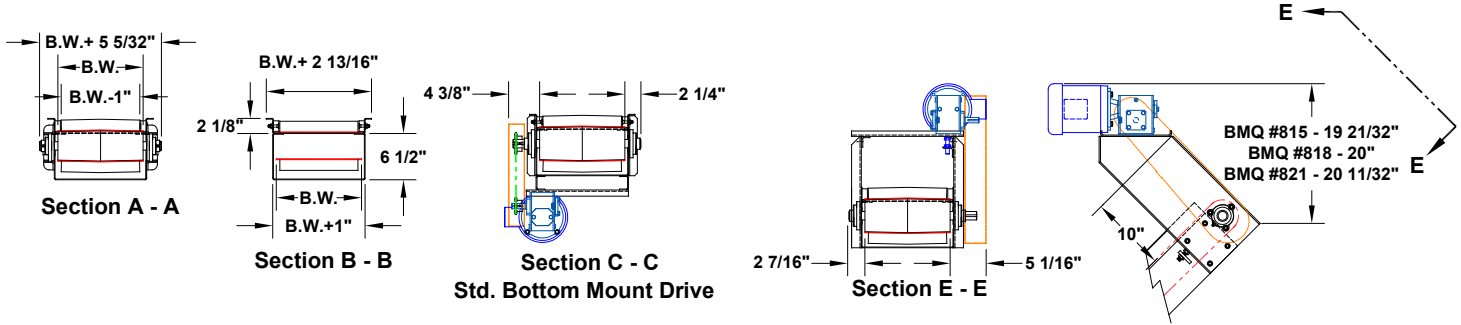


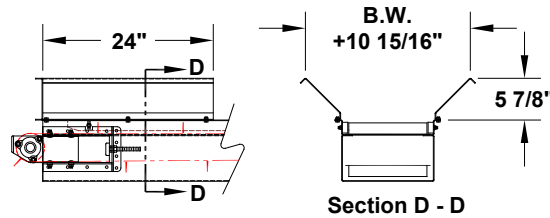
# MODEL 310 PARTS CONVEYOR



30°		"D" O.A.L.			
		"B" (Incline)			
"A" INFEED	24"	36"	48"	60"	72"
	36"	71	81.5	92	102.5
	48"	83	93.5	104	114.5
	60"	95	105.5	116	126.5
"C" Hgt.		26	32	38	44

45°		"D" O.A.L.			
		"B" (Incline)			
"A" INFEED	24"	36"	48"	60"	72"
	36"	65.5	74	82.5	91
	48"	77.5	86	94.5	103
	60"	89.5	98	106.5	115
"C" Hgt.		34.7	43.2	51.7	60.2

Optional Infeed Hopper



# MODEL 310

## PARTS CONVEYOR



If the economical handling of your parts requires a unique approach, you should consider using the **Titan Model 310 horizontal/incline belt conveyor**. The Model 310 is offered in various belt widths with horizontal and incline lengths manufactured to fit your specific requirement. The standard belt is a black P.V.C. with 1-1/2" high rubber cleats on 12" Centers with other types of belts available as optional equipment. The Model 310 is furnished with an adjustable undercarriage arrangement with 10" diameter wheels for portability. Electrical controls are supplied as optional equipment.



MODEL 310 SPECIFICATIONS		
	Standard	Options
<b>Belt Widths</b>	4", 6", 8", 12", 18", 24"	Specify belt width
<b>Lengths</b>	24" infeed, 36" incline	36", 48", 60" infeed, 48", 60", 72" incline
<b>Curves</b>	30°, 45°	60°
<b>Belt Type</b>	Black PVC 120 with 1 1/2" high cleat on 12" centers (max.)	Food grade belts - cleats
<b>Drive</b>	1/2 H.P. 230/460/3/60	3/4, 1, 1-1/2, HP, 115/230/1/60, TEFC, washdown, severe duty, inverter duty, brake motor
<b>Drive Pulley</b>	4" diameter crown faced rubber lagged	
<b>Frame</b>	6 1/2" deep formed 12 ga.	
<b>OPTIONAL</b>		
Drive location, speed, variable speed, controls, lengths, belt type, infeed hopper, discharge chute, siderails, supports, casters, special paint, cleats - Consult Factory		

**NOTE: Specifications subject to change without notice**