

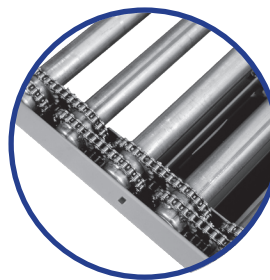
MODEL 519

CHAIN DRIVEN LIVE ROLLER

TITANTM
CONVEYORS



The **Model 519 Chain Driven Live Roller Conveyor** from Titan is designed to handle medium duty loads such as boxes, light weight pallets and drums. The unit incorporates a #40 chain with heavier duty roll-to-roll drive. The frame is made of formed 10 gauge. The standard drive is 1/2 H.P. for 60 F.P.M. roller speed. A wide range of standard effective widths are available. Standard roller spacings are 4", 6", 8", and 12". Standard floor supports supplied are adjustable for approximately 30" top of roller. The Model 519 has a minimum length of 4' and can be ordered in lengths to meet individual requirements. Consult factory for further details and options.



NOTE:
Roll to Roll Drive **Warning** -
Do Not operate conveyor
without chain guard.

MODEL 519 CHAIN DRIVEN LIVE ROLLER CONVEYOR SPECIFICATIONS

	Standard	Options
Effective Widths	12" to 50"	Specify
Lengths	5' min.	3' min., max. based on application
Roller Size	1.9" Dia. x 16 ga. with 7/16" hex shaft 250 lb. Roller Capacity	
Roller Center	4"	6", 12"
Frame	Formed 10 ga.	
Drive	1/2 H.P. 230/460/3/60	3/4, 1, 1-1/2, 2 H.P. 230/460/3/60
Chain Drive	#40	#50 available

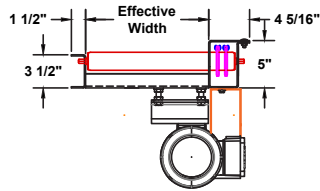
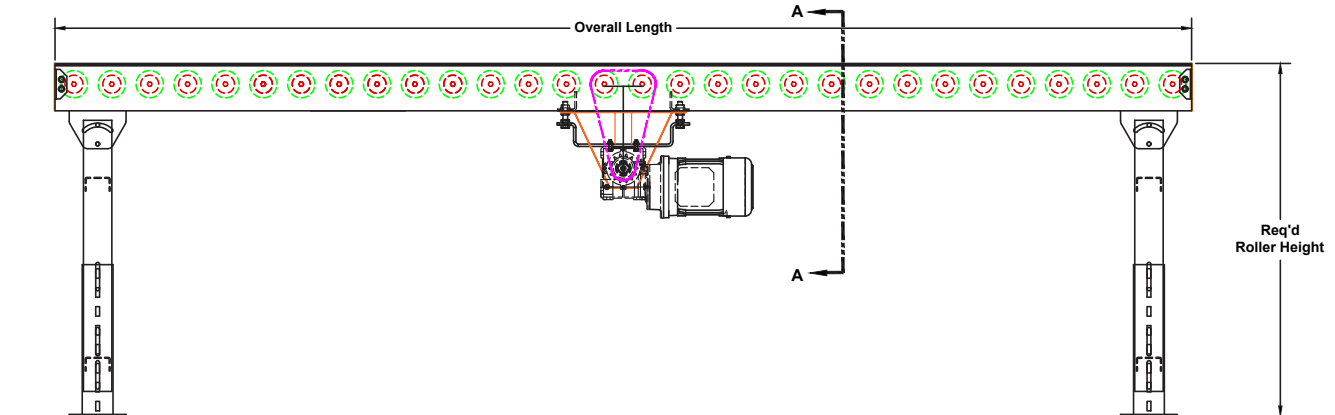
OPTIONAL

Roller Space - Consult factory, Roller Center - Consult Factory, Drive locations: as needed, Galvanized or stainless construction, H. P. , Speeds, Variable speed, Controls, Coated rollers, Fixed & adjustable side rails, Paint, 2, 3 or 4 strand chain transfers, Pallet lifts, "C" Face brake and Fixed end stop, Rollers set low, UHMW sleeves and Knee braces, Air operated blade stop, walk plates, Supports - 6" @ #8.2 structural channel,

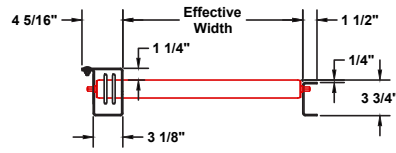
NOTE: Specifications subject to change without notice

MODEL 519

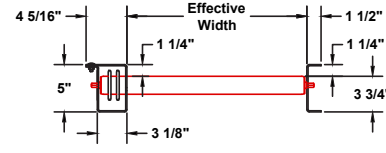
CHAIN DRIVEN LIVE ROLLER



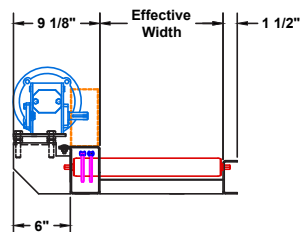
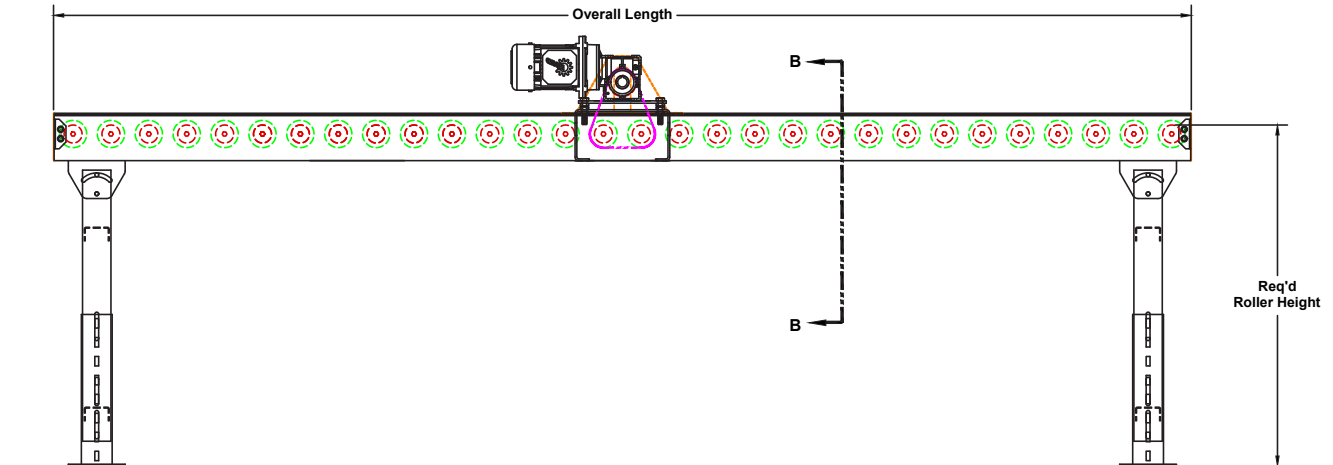
Section A-A
Standard Bottom Mount Drive



Rollers Set High



Rollers Set Low



Section B-B
Standard Top Mount Drive



735 Industrial Loop Road • New London, WI 54961-9612
920-982-6600 • Fax 920-982-7750 • Toll Free 800-558-3616