

MODEL MDR

MOTOR DRIVEN ROLLER CONVEYOR

POLY V-BELT

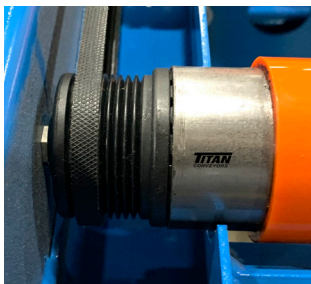


Titan Conveyors™ introduces the Motorized Driven Roller Conveyor, a modular conveyor system utilizing a 24 volt DC motorized drive within a roller. Adjacent rollers are slave-driven from it using chains, Poly V-belts, or Urethane O-belts. Loads up to 3900# can be moved with these clean and efficient motorized roller systems.

Among many advantages of the Motorized Driven Roller Conveyor are:

- Maintenance free
- Lower operating cost
- Plug & play controls
- Lower power consumption
- Reversible
- No awkward motor & gearbox
- Quieter
- Dynamic braking
- Low profile pop-up transfer
- 24v Safety
- Variable speed

Motorized driven roller conveyors are perfect for large zone controlled systems in assembly lines or unit handling of pallets and cases.



Poly V-Belt Driven Roller

Motorized Roller Conveyor with 2-Strand Pop-up Chain Transfer

Belt or Chain Driven Motorized Roller Conveyor Specifications

	Model MDR (Urethane O-Belt)	Model MDR (Chain to Chain & Poly V-Belt) 1.9" dia. roller	Model MDR (Chain to Chain & Poly V-Belt) 2-1/2" dia. roller
Effective Widths	13" to 42"	13" to 42"	13" to 72"
Lengths	3' Min.	3' min.	3' min.
Roller Size	1.9" Dia. x 16 ga. with 7/16" hex shaft	1.9" Dia. x 16 ga. with 7/16" hex shaft	2.5" Dia. x 11 ga. with 11/16" hex shaft
Roller Center	2-1/4", 3", 4", or 6"	4", 6", 12"	2-13/16", 3-7/16", 4-3/8", 5", 6", 10"
Frame	Formed 10 ga.	Formed 10 ga.	Formed 7 ga.
Drive	Ittoh Denki 24 Volt DC Motor Drive Roller	Ittoh Denki 24 Volt DC Motor Driven Roller	Ittoh Denki 24 Volt DC Motor Driven Roller
Roll to Roll Drive	Urethane O-Belt	Poly V-Belt or #40 Chain	Poly V-Belt or #40 or #50 Chain

OPTIONAL

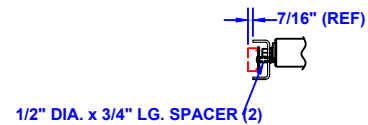
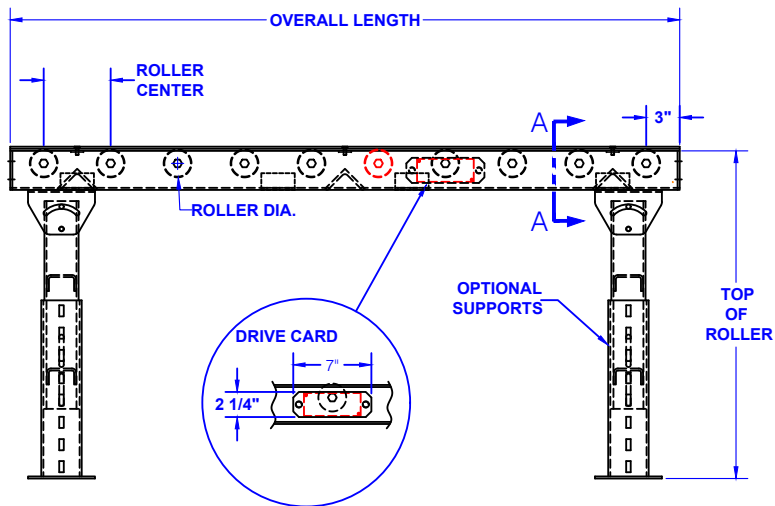
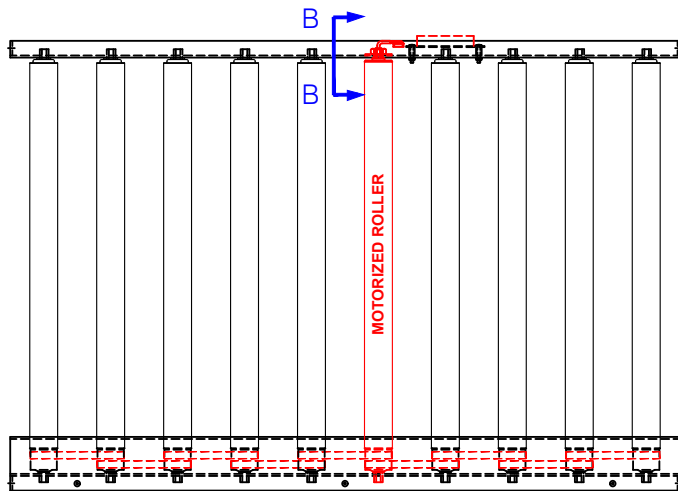
Roller Centers - Consult Factory, Galvanized or stainless construction, Controls, Coated rollers, Paint, 2 or 3 strand chain transfers, Pallet lifts, End stops, UHMW sleeves, Air operated blade stop, Supports

NOTE: Specifications subject to change without notice

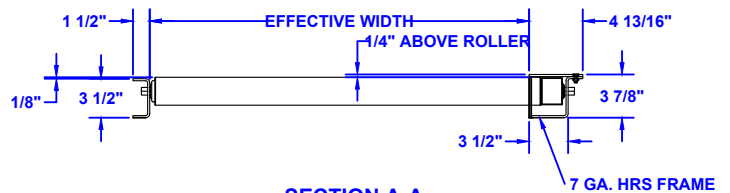
MODEL MDR

MOTOR DRIVEN ROLLER CONVEYOR

MOTOR DRIVEN ROLLER POLY V-BELT DRIVE



SECTION B-B



SECTION A-A



735 Industrial Loop Road • New London, WI 54961-9612
920-982-6600 • Fax 920-982-7750 • Toll Free 800-558-3616
Website: www.titanconveyors.com • Email: sales@titanconveyors.com