



**INDUSTRIAL  
CONVEYOR  
SPECIALISTS**

# **Heavy Duty Hinged Steel Belt Conveyors**



**Designed for years of  
maintenance free  
operation in hostile  
environments**

***Extreme Duty  
Proven Reliability  
Low Maintenance  
Quick Delivery***

***Since 1981***

735 Industrial Loop Road  
New London, WI 54961-2600

Phone: (920) 982-6600

Fax: (920) 982-7750

Toll Free: 1-800-558-3616

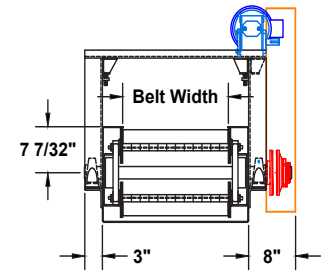
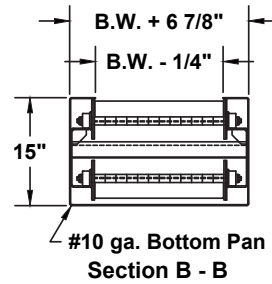
Website: [www.titanconveyors.com](http://www.titanconveyors.com)

Email: [sales@titanconveyors.com](mailto:sales@titanconveyors.com)

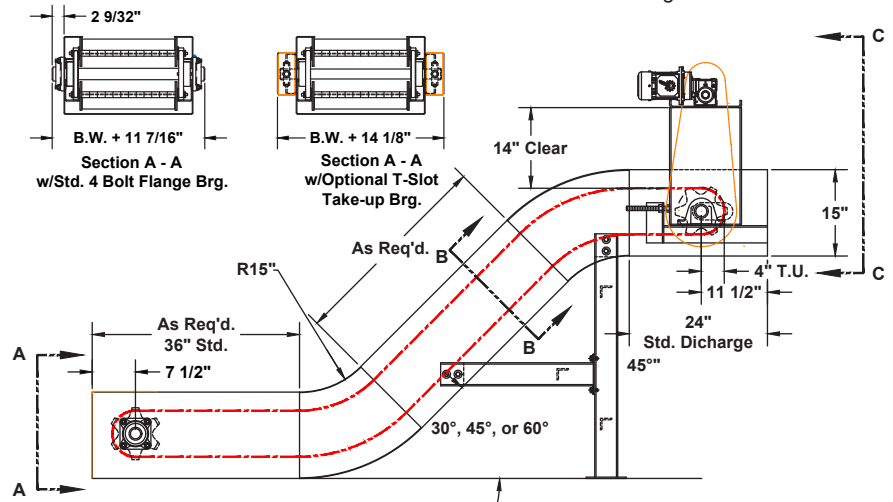
## MODEL 640

- Applications warranting heavy duty cycle
- Meets Heavy Duty automotive and foundry applications
- Economical 2-piece belt construction

When your application warrants a heavy-duty conveyor, you should select the Titan Model 640, 4" Pitch Hinged Steel Belt Conveyor. With a 10 gauge apron, 7 gauge outside sidebars (standard), cast iron flanged rollers, a 3/4" thru tube with 1/2" pin the allowable belt pull increases to 6,000 lbs. (double the 2-1/2" Pitch). Only Titan offers a 3" high x 7 gauge sidewing, a feature that gives you added capacity. The Model 640 construction is a 10 gauge frame by 15" deep with liquid tight bottom pan or open construction. Heavy-duty shafts and bearings assure reliable service in the most rugged operating conditions. Standard curves can be supplied in 30°, 45°, and 60° angles. The Model 640 is available in widths from 6" to 60".

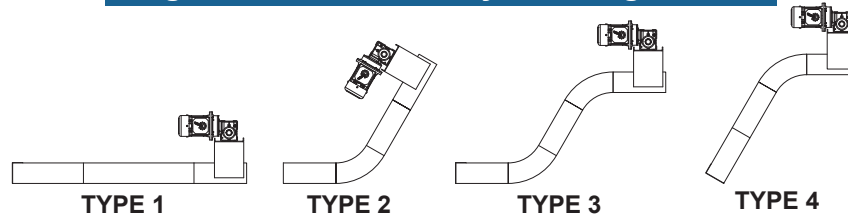


**Section C - C**  
Sidemount & Bottom Mount  
Drive Packages also available



SPECIFICATIONS	
STANDARD	OPTION
Drive - 1/2 H.P. 230/460	Consult factory for special application and construction of belt
Frame - 15" deep formed 10 ga.	
Support - Structural steel	
Belt - 4" pitch, 10 ga. apron - widths 6" to 72"	Plain, perforated, pimpled, perforated & pimpled, welded barrels, impact plats
Curves - 30°, 45°, 60°	
Chain Pull - 4000#	6000#

### Hinged Steel Belt Conveyor Configurations



Titan will work with you to design and build a conveyor system that will solve your heavy scrap removal problems





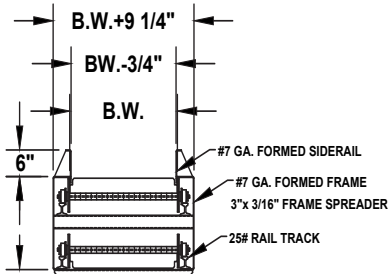
## MODEL 660

- Rugged steel for large scrap handling
- 3" diameter, bushed single flange roller
- Double outside side bar and 3/4" thru axle
- Designed for years of maintenance free operation in the most hostile conditions

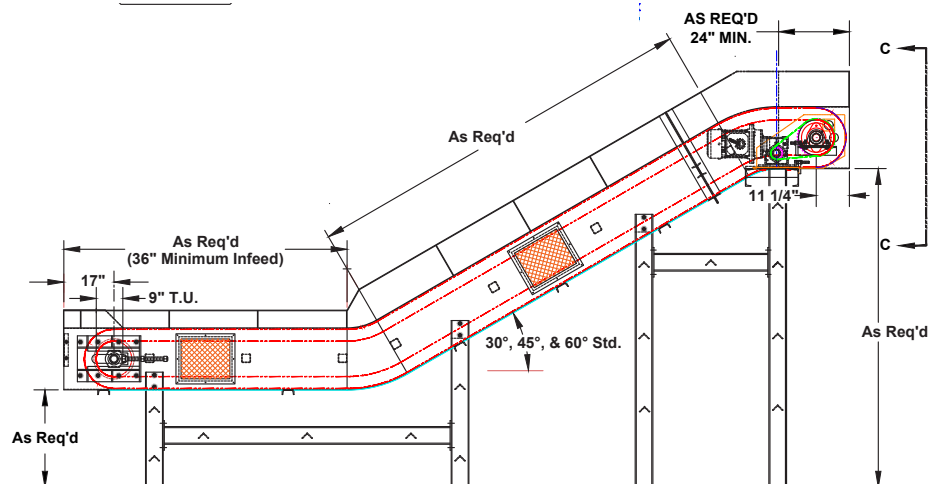
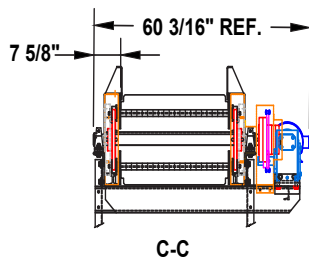
Large scrap handling systems dictate using a rugged steel belt. Consider the Model 660, 6" pitch Hinged Steel Belt Conveyor. By using the unique Titan 6" pitch belting, The Model 660 will satisfy most heavy-duty scrap handling requirements. Our uniquely designed sidinging reduces the gap between sidinging and apron (eliminating carryover) and yet the rugged (1/4" thick) design compensates for most severe applications. Combine the unique sidinging with a standard 1/4" thick apron, 3" diameter, bushed, single flanged roller, double outside sidebars and a 3/4" thru axle and you have a conveyor that will withstand years of heavy industrial use. Four different configurations are available with standard curves of 30°, 45°, and 60° available.



SPECIFICATIONS	
STANDARD	OPTION
Drive - 3/4 H.P. 230/460	Consult factory for special application and construction of belt
Speed - 30 F.P.M.	
Frame - Formed 7 ga. Profile - 21" with 8 tooth 12" pitch dia.	Profile - 25" with 8 tooth 15.86 pitch dia.
Support - Structural channel	
Belt - 6" pitch x 3 1/4" apron	
Curves - 30°, 45°, 60°	
Paint - 1 coat gray	Titan can match any paint sample

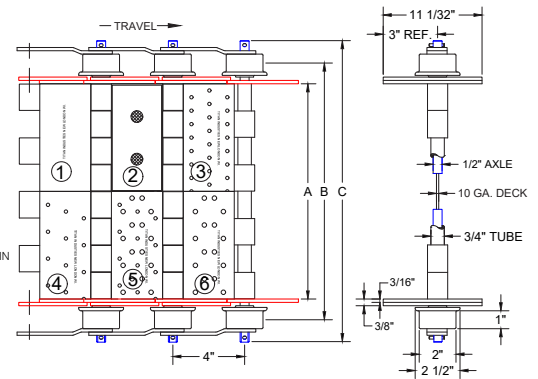
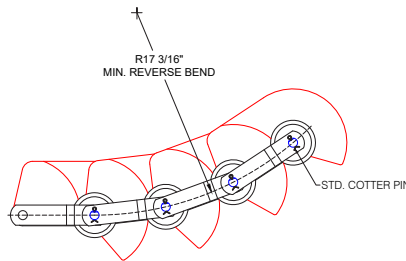
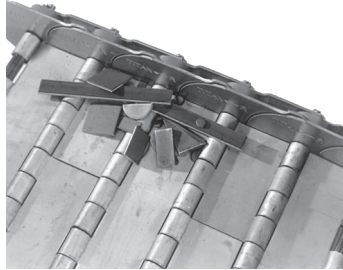


INCLINE SECTION



## 4" Hinged Steel Belt

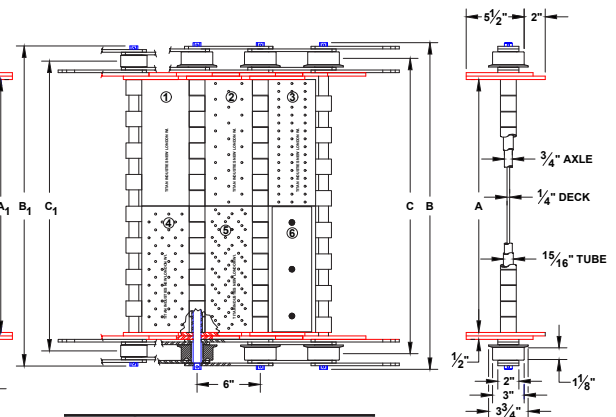
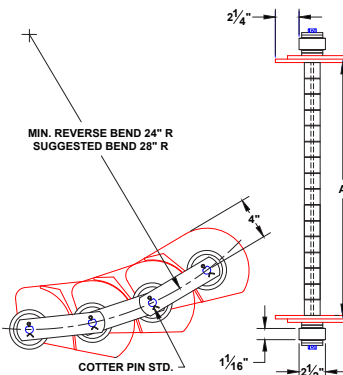
- Heavy duty 10 gauge apron with 3" high 7 gauge sidewing
- 1/2" diameter axle with 3/4" bushing
- 2" diameter single flange thru hardened sintered metal roller
- Plain, Pimped, perforated or impact apron
- 4000# chain pull with sidebar
- 1-3/4" diameter single flange or flat face roller available



No.	Plate Style
1	Plain
2	W/Impact Bar
3	Double Perforated
4	Perforated
5	Pimped/Perforated
6	Pimped

## 6" Hinged Steel Belt

- Extra heavy duty 1/4" apron with 4" high 1/4" sidewing
- 3/4" diameter axle with heavy duty bushing
- 3" single flange thru hardened sintered metal roller
- Plain, pimped, perforated or impact apron
- 8900# chain pull with sidebar
- 2-1/2" diameter flat face roller available
- Welded sidewing available



No.	Plate Style
1	Plain
2	Perforated
3	Double Perforated
4	Pimped
5	Pimped & Perforated
6	W/Impact Bar

## AUTHORIZED DISTRIBUTOR

**TITAN**  
CONVEYORS

735 Industrial Loop Road, New London, WI 54961-2600

- Phone: (920) 982-6600
- Fax: (920) 982-7750
- Toll Free: 1-800-558-3616
- Website: [www.titanconveyors.com](http://www.titanconveyors.com)
- Email: [sales@titanconveyors.com](mailto:sales@titanconveyors.com)